

Ignite UI™ 2013.1 Release Notes



Create the best Web experiences in browsers and devices with our user interface controls designed expressly for jQuery, ASP.NET MVC, HTML 5 and CSS 3. You'll be building on a solid foundation of robust Web technology without the need for plug-ins or extensions.

Installation

Downloading

[Download Ignite UI 2013.1 here.](#)

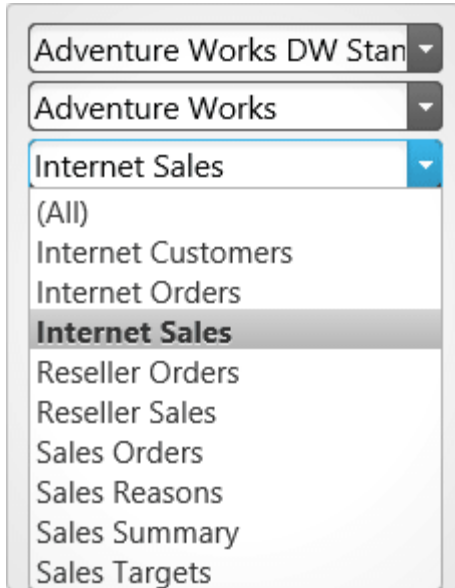
What's New – 2013 Volume 1

The 2013 Volume 1 release of Ignite UI continues to deliver high performance, enterprise-class HTML5 and jQuery-based controls that can power desktop, table, and mobile phone applications. The latest release boast Touch and Mobile support across controls, a new web-based HTML/jQuery, and ASP.NET MVC Pivot Grid, responsive web design framework and controls support, a new Tile Manager UI, great new Data Visualization charting controls that offer more parity across platforms, and support for popular KnockoutJS MVVM library key controls like the Grid,Tree, Combo, and Editors.

Pivot Data Selector – New!

The new Pivot Data Selector is an interactive jQuery based UI control that enables users to select data slices, typically, when data is being visualized in a Pivot Grid. All of the UI features that you would expect to be used to interact with an actual OLAP or flat datasource are wrapped up in this control. They include:

- Dropdowns for selecting database, cube and measure group
- A metadata tree displaying all dimensions, measures, hierarchies, and levels
- Drop areas for selecting of hierarchies and measures
- A deferred update checkbox
- An update button to refresh the view connected to the data selector



Pivot Grid – New!

The Pivot Grid control is a jQuery-based data presentation control for displaying data in a pivot table. You can perform complex analysis on the supplied data. The Pivot Grid uses the Online Analytical Processing (OLAP) approach to present the results of multi-dimensional queries in an easy to comprehend manner. It uses an instance of either `igFlatDataSource™` or `igXmlaDataSource™` component as data source.

Sales Reason ✕					
Internet Order Count ▶		Product Categories ✕			
Sales Territory ✕		- All			
		+ Accessories	+ Bikes	+ Clothing	All
- All Sales Territories		16,551	8,788	6,949	21,003
- Europe		4,799	2,819	2,066	5,865
+ France		1,504	813	626	1,827
+ Germany		1,479	930	636	1,804
+ United Kingdom		1,816	1,076	804	2,234
+ North America		8,550	3,672	3,517	10,667
+ Pacific		3,202	2,297	1,366	4,471

Pivot View – New!

Using the Ignite UI Pivot Grid, Pivot Data Selector, and Splitter controls assembled in one two-panel control, The Pivot View gives you every tool you need for manipulating multidimensional (OLAP) data in on feature-rich pivot grid.

Key Features

- **Browser Based Business Intelligence** – Bind to server-side XMLA data sources like Oracle, SAP & SQL Server Analysis Services, or server & client-side Flat data sources.
- **Rich Data Discovery** – Enable rich data discovery with drilldown, sorting, and data filtering.
- **Multiple layouts** - Change how the row headers are arranged for display with regards to the amount of space they occupy with the Standard or default Compact View.
- **Build the Complete Experience** - Using the Pivot Data Selector control to provide users with the ability to add or remove hierarchies and measure to and from the Pivot Grid.
- **Data Selection** - Select which database to connect to, which cube to extract data from, or a set of measure groups using drop-downs in the Pivot Data Selector.
- **Metadata Tree** – Display available dimensions with their respective hierarchies, along with a list including all available measures. They are loaded in the tree once the user chooses a database, cube, and measure group.
- **Deferred Update** – Immediate and Deferred modes are supported, which give control to the user on the frequency of the grid updates.
- **Configurable Panel Views** - Swap the Pivot Grid and the Selector using the DataSelectorPanel properties of the Pivot View.

Invoices

- Measures
 - Freight
- Location
 - Location
- Dates
 - Required Date
 - Shipped Date
 - Order Date
- Customers
 - Customer

Filters **Columns**

Custom

Required

Rows **Measures**

Location

Freight

Defer Update

Customers	Required Date
+ All Periods	
- All Locations	13126.33
+ France	935.18
+ Germany	2089.09
+ Brazil	1589.92
+ Belgium	57.57
+ Switzerland	309.83
+ Venezuela	507.98
+ Austria	1934.77
+ Mexico	244.37
+ USA	2148.95
+ Sweden	373.50
+ Finland	243.89
+ Italy	236.09
+ Spain	237.77
+ UK	659.49

Doughnut Chart – New!

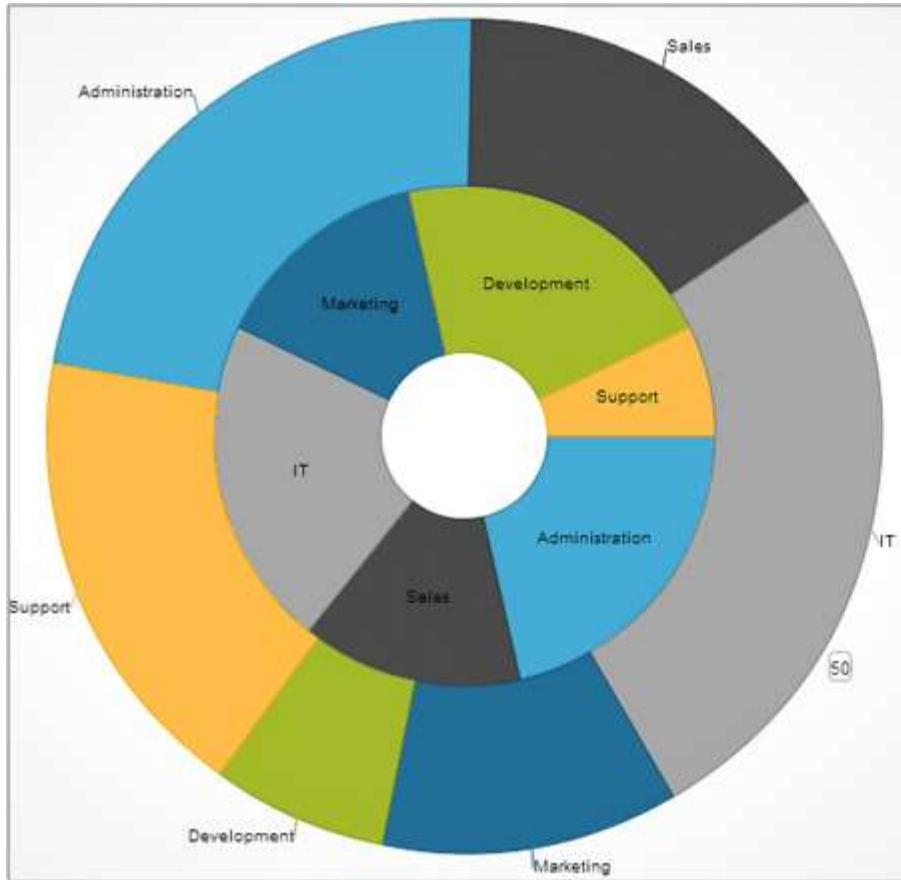
Express your data with multiple series using this rich Doughnut Chart. Similar to a Pie Chart, the Doughnut Chart is used to show categorical statistics expressed in percentages. Yet with its hollow center, it's best for displaying multiple series using concentric rings where each ring represents a data series. Bind easily to data, configure the inner radius, display exploded slices, customize themes, and more with this well-rounded control.

Key Features

- **Multiple Ring Series & Data-Binding** – The Doughnut Chart supports one or more rings surrounding a hollow or empty center. The center may either be a "blank circle" or may contain a label. The center does not typically represent data. Each ring can either represent a separate data series that you data-bind to an `igDataSource` via the `itemSource` option on each ring.
- **Configurable Inner Radius** – The inner radius of the Doughnut Chart center is configurable, allowing you to select the center as an object and extend the boundary or set the inner radius via a property setting.
- **Slice / Section Labeling** – Control how each slice or section of the Doughnut Chart is labeled. Options are available to automatically select how the labels are displayed inside or outside the chart, including:
 - No labels
 - Labels displayed at the center inside of each section / slice
 - Labels displayed around the edges inside of each section / slice
 - Labels displayed outside of each section / slice, with a configurable `LabelExtent` distance
 - A `BesFit` Method that automatically chooses whether each label should be displayed inside or outside the chart
- **Slice Selection** – Allow users to select slices and change the color of selected slices. Slices can be selected either programmatically or using touch and mouse gestures.
- **"Others" Category** – The underlying data for any Doughnut Chart can often contain small value items, too numerous to display in a significant manner via separate slices. For such occasions, the "Others" category allows for automatic aggregation

of several data values into a single slice. You can set the threshold to designate which values get their own slice and which values will get rolled under "Others."

- **Styling & Themes** – Customize and style the Doughnut Chart to your app design and your brand. Simple properties are exposed to easily style the outlines and brush fill colors of the slices, allowing you to use solid colors as well as gradients. Alternatively, you can use chart themes to give your doughnut charts and other charts a consistent and color-coordinated look and feel. Simply set the theme property to one of the predefined themes or create your own.



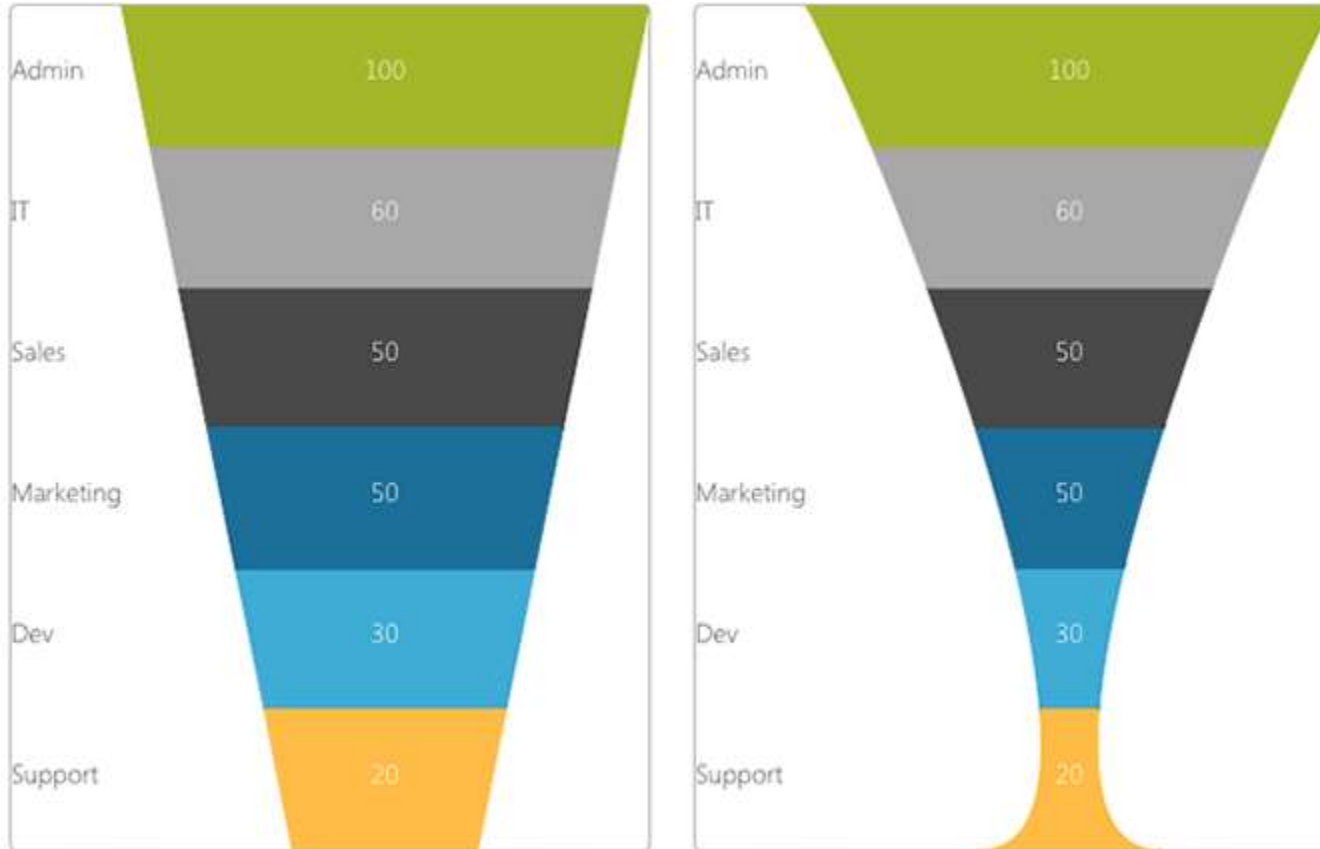
Funnel Chart – New!

Visually showcase diminishing values in your HTML5 Web applications and sites with our new funnel chart, a single series chart that displays data in a funnel shape with a variable number of sections, each representing the data as different portions of 100%. The

funnel chart control uses the new HTML5 Canvas tag to plot funnel charts on web pages and makes it easy for end users to illustrate value "fallout" in the sales process or bottlenecks in the flow of a multi-step process.

Key Features

- **Weighted Slices** – Configure slices to be displayed with different heights based on their value. This display option allows for a more obvious visual clue for the value of a slice compared to other slices.
- **Slice Selection** – Enable slices to be selected and configure selected and unselected styles for chart slices. With Slice Selection functionality, you can select slices with a single mouse click or screen tap. Another click or tap will deselect the slice. Additionally, the selected and unselected styles can be defined and applied depending on the state of a slice.
- **Bezier Curve Shape** – Display the smallest value on top, as opposed to the regular view. By default the Funnel Chart displays the largest slices (the largest data value) on top, with the rest of slices going down sorted in descending value order.
- **Inverted Funnel** – Allow users to select slices and change the color of selected slices. Slices can be selected either programmatically or using touch and mouse gestures.
- **Styling** – The Funnel Chart offers built-in styling whereby it attempt to obtain default values for some of its properties from CSS classes. The control, sub-controls, and attributes can all be styled to match the desired look of your web applications or site. Custom styling includes colors, fonts, borders, padding, opacity, background, text alignment, and more.

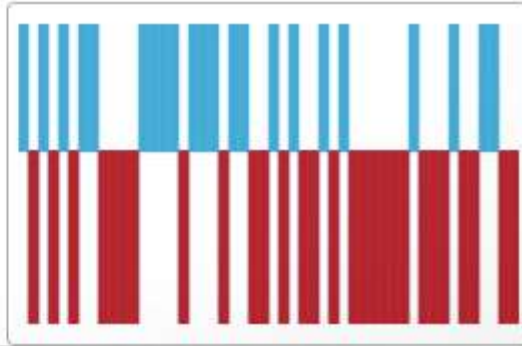
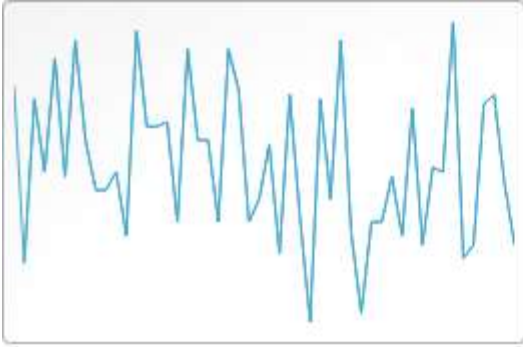


Sparkline – New!

The new Sparkline control is a data-intense, design-simple graphic that allows end users to spot trends, variations and patterns in data in a clear and compact representation. What sets the Sparkline chart apart from its full DataChart cousin is its lightweight nature which allows dozens or even hundreds of sparkline charts to be loaded without a list or grid, enabling quick trend lookup in Web applications and sites.

Key Features

- **Sparkline Types**– Configure the Sparkline Chart to display one of four baseline microchart types: Line, Area, Column, and Win/Loss.
- **Data Binding**– Each Sparkline Chart can be populated automatically by data-binding it to an igDataSource for both static and live data scenarios.
- **Markers Support**– Display markers such as First/Last, High/Low, Negative and Normal.
- **Trend Lines**– Many different trend lines can be applied to help users analyze their data, including linear, weighted, quadratic, cubic, quartic, quintic, logarithmic, exponential, and more.
- **Adjust Ranges**– Apply Normal, Minimum, and Maximum ranges to any Spark Chart type.
- **Styling**– The Sparkline Chart control offers built-in styling where the control attempts to obtain default values for some of its properties from CSS classes. The control, sub-controls, and attributes can all be styled to match the desired look & feel of your Web application or site. This includes colors, fonts, borders, padding, opacity, background, text alignment, and more.

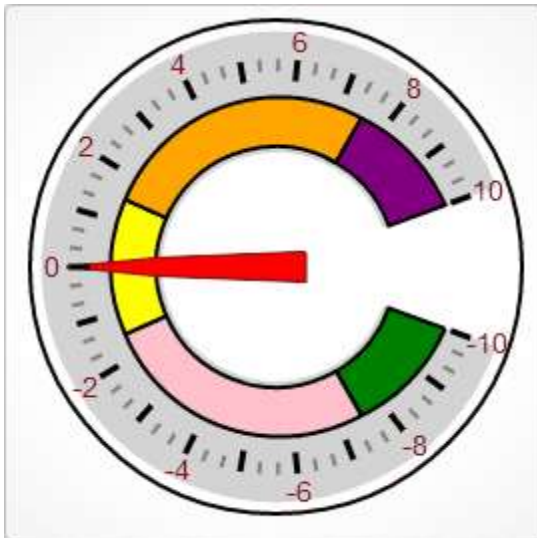


Radial Gauges – New!

Make your data visualizations and dashboards more engaging with Radial Gauges that show off KPIs with rich style and interactivity. The round and semi-round gauges are powerful, easy to use, and highly configurable to present dashboards capable of displaying clocks, industrial panels, automotive dashboards, and even aircraft cockpits. The Ignite UI Radial Gauges are compatible with the NucliOS (for native iOS) and XAML (WPF and Silverlight) versions of the Gauge, offering visual and functional parity on multiple platforms.

Key Features

- **Fully Configurable Radial Scale**– Control the Start and End positions of the scale, major and minor tick marks, labels, color ranges, and sweep direction. You can create full 360 degree scales, or half-circular gauges with 180 degree, 90 degree, or 45 degree scales, or any custom value you want.
- **Configurable Needle**– Customize the Gauge's needle attributes, such as color, length, point, base, and cape.
- **Configurable Backing**– Configure the Radial Gauge to control various visual attributes such as colors, shape around the Gauge edges (fitted or circular), oversweep, and corner radius. Additionally, you can control the transparency and display of any custom image from with your Cascading Style Sheet (CSS).
- **Motion Framework Animations Support**– The Radial Gauge control supports animated transitions between configuration states. The control gradually animates as it redraws changes to the needle, needle position, scale range, color range, and more. You can control the speed of the animations by setting the desired Transition Duration.



Data Chart - Enhanced!

Already the most powerful charting control for HTML5 developers, the 13.1 enhancements to Ignite UI's Data Chart introduces 17 new chart types, enabling you to easily implement heavy-duty data visualization and analysis on large volumes of data with high performance in Web and hybrid HTML5 applications. The Chart now supports a total of 39 chart types, including the following new chart series introduced in release 13.1:

- **Category Series** - The Category Series is expanded to include the Category Point chart type.
- **Stacked Chart Category Series** - The Stacked Chart Category Series now includes:
 - Stacked Area Series
 - Stacked Bar Series
 - Stacked Column Series
 - Stacked Line Series
 - Stacked Spline Area Series
 - Stacked Spline Series
 - Stacked 100 Area Series
 - Stacked 100 Bar Series
 - Stacked 100 Column Series
 - Stacked 100 Line Series
 - Stacked 100 Spline Series

- **Scientific Charts** – New scientific charts supported include Polar Spline Area Series, Polar Spline Series, and the Radial Area Series.
- **Chart Scatter Series** - Also known as Scatter Plots or scattergraph, you can benefit from this type of mathematical diagram in your Web and hybrid apps using Cartesian coordinates to display values for two variables for a set of data. You can also enable trend lines to facilitate data analysis. Scatter Spline Series is now supported.



Grid – Enhanced!

Still the market leader in Grid features and performance the Ignite UI Grid is enhanced in 13.1 to include responsive web design, along with the the official introduction of cell merging and column fixing capabilities.

Desktop Responsive Web Design Mode

Customer ID	Company Name	Contact Name	Contact Title	Address	City	Country
ALFKJ	Alfreds Futterkiste	Maria Anders	Sales Representative	Obere Str. 57	Berlin	Germany
ANATR	Ana Trujillo Emparedados y helados	Ana Trujillo	Owner	Avda. de la Constitución 2222	México D.F.	Mexico
ANTON						
AROUT						
BERGS	Ana Trujillo Emparedados y helados	Ana Trujillo	Owner	Avda. de la Constitución 2222		
BLAUS	Antonio Moreno Taquería	Antonio Moreno				
BLOPP	Around the Horn	Thomas Hardy				
	Berglunds snabbköp	Christina Berglund				
	Blauer See Delikatessen	Hanna Moos				
	Blondesddsl père et fils	Frédérique Citeaux				
	Bólido Comidas preparadas	Martin Sommer				
	Bon app'	Laurence Leblanc				
	Bottom-Dollar Markets	Elizabeth Lincoln				

Tablet Responsive Web Design Mode

Company Name	Contact Name	Contact Title	Address
Alfreds Futterkiste	Maria Anders	Sales Representative	Obere Str. 57
Ana Trujillo Emparedados y helados	Ana Trujillo	Owner	Avda. de la Constitución 2222
Antonio Moreno Taquería	Antonio Moreno		
Around the Horn	Thomas Hardy		
Berglunds snabbköp	Christina Berglund		
Blauer See Delikatessen	Hanna Moos		
Blondesddsl père et fils	Frédérique Citeaux		
Bólido Comidas preparadas	Martin Sommer		
Bon app'	Laurence Leblanc		
Bottom-Dollar Markets	Elizabeth Lincoln		

Phone Responsive Web Design Mode

Company Name	Contact Name
Alfreds Futterkiste	Maria Anders
Ana Trujillo Emparedados y helados	Ana Trujillo
Antonio Moreno Taquería	Antonio Moreno
Around the Horn	Thomas Hardy
Berglunds snabbköp	Christina Berglund
Blauer See Delikatessen	Hanna Moos
Blondesddsl père et fils	Frédérique Citeaux
Bólido Comidas preparadas	Martin Sommer

KnockoutJS Support – Enhanced!

We've applied enhanced support for the MVVM data patterns via the KnockoutJS library for several key controls, including Combo Box, Editors, and Tree.

Splitter – New!

Create dynamic layouts with resizable and collapsible panels. This unique control can be horizontal or vertical, can include buttons for Left, Right, or Collapse, and can be dragged accordingly to resize a containers widget. It is designed with programmable events for Collapse, Expand & Resize, and has full keyboard support for interactions. The control also features support for nested splitters.

- ▶ North America
- ▼ South America
 - Brazil**
 - Uruguay
- ▶ Europe

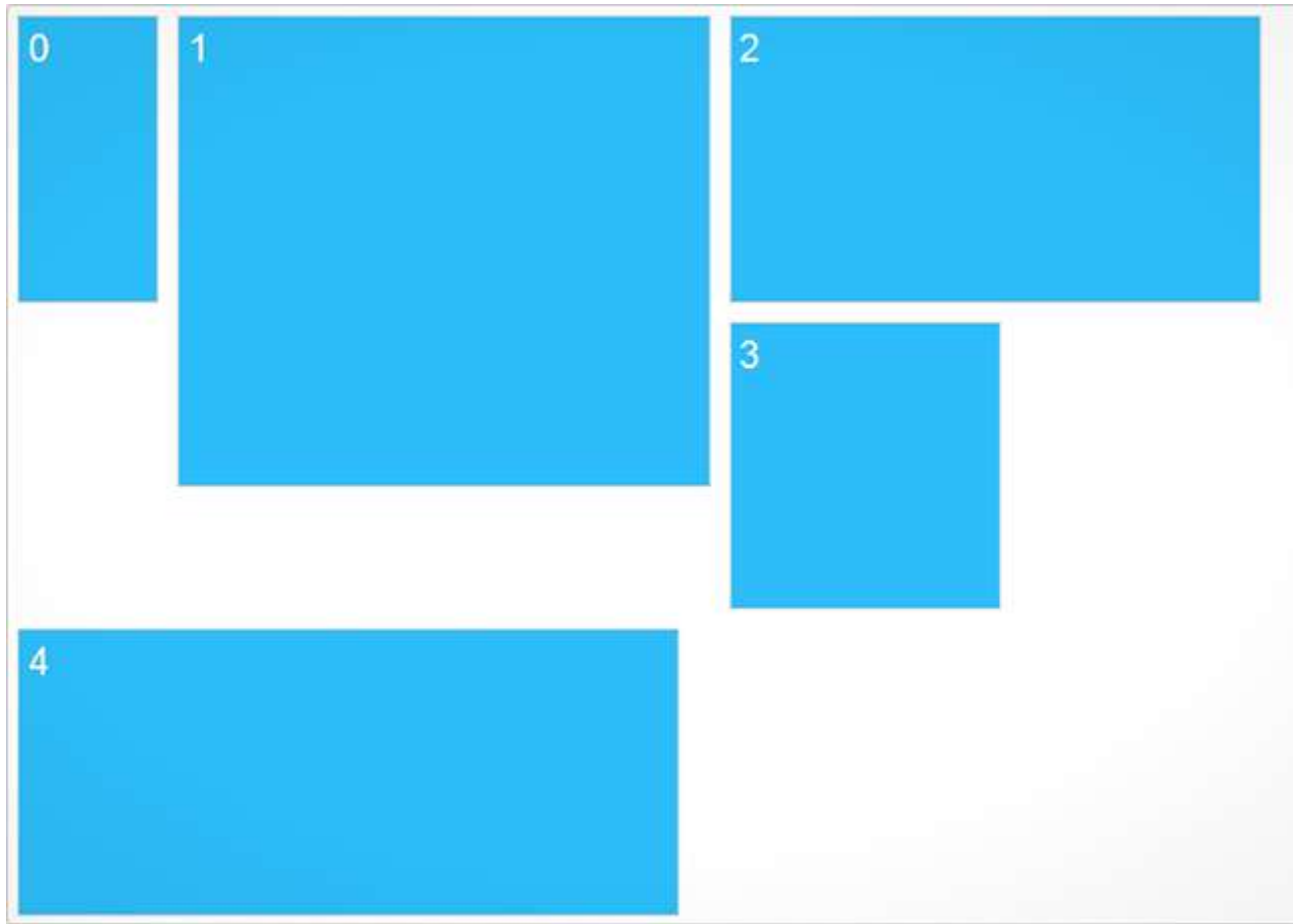


Name	Country	Latitude	Longitude
Sao Paulo	Brasil	-23.5489	-46.6388
Fio de janeirc	Brasil	-22.91	-43.2
Salvador	Brasil	-12.97	-38.5

Layout Manager – CTP!

From laying out webpages to single page applications, the Layout Manager is a jQuery UI widget without a UI of its own. All of the layout modes are responsive and fluid by design, meaning the layout adjusts based on the resize events on the browser. Layout Customizations allows you to design Flow, Border, Vertical, or Column layouts based on the resizing algorithm that suits your needs,


while the interactive Grid lets create an absolute positioned layout that can be interactively minimized and maximized in a non-visual Tile Manager-like UI.



Tile Manager – New!

When static, and even responsive UI, isn't enough to deliver maximum user experience, you can rely on the Tile Manager to deliver a new level of richness to HTML pages. Based on the Layout Manager control, the Tile Manager give touch-friendly, table-ready, interactive UI that allows your end users to expand, collapse, and move widgets on the page. Create a grid-based layout in HTML that allows widgets to be hosted in defined column and row spans. The control's Tile Layout feature enables you to arrange tiles explicitly as regimented columns and rows like in a Grid panel. You can even span multiple columns and rows or display them as a data-bound Items Control that automatically creates a series of tiles. You can also utilize State-Based Customization that lets you different item templates and size constraints to your tiles and have them automatically applied when the state changes between minimized, minimized expanded, normal, and maximized.


Bill Gates




William Henry "Bill" Gates III (born October 28, 1955) is an American programmer, inventor, business magnate and philanthropist. Gates is the former chief executive and current chairman of Microsoft, the world's largest personal-computer software company, which he co-founded with Paul Allen. He is consistently ranked among the world's wealthiest people and was the wealthiest overall from 1995 to 2009, excluding 2008, when he was ranked third; in 2011 he was the wealthiest American and the second wealthiest person. During his career at Microsoft, Gates held the positions of CEO and chief software architect, and remains the largest individual shareholder, with 6.4 percent of the common stock. He has also authored and co-authored several books.

Skills:
Entrepreneurship

Douglas Crockford



John Resig



Release Notes

Component	Product Impact	Description
Help	Bug Fix	There is NetAdvantage for jQuery in events tab
Help	Bug Fix	Help table of contents is throwing exceptions in help viewer
Help	Bug Fix	The file described in the help does not exist in the product.
Help	Bug Fix	The locally installed API documentation has wrong product name.
Help	Bug Fix	jQuery help - empty description in XmlConstants Class Fields
Help	Bug Fix	jQuery help->IGrid<T> Interface Members -> missing descriptions for some methods
Help	Bug Fix	The product name on http://igusnjewblden3/ is wrong.
Help	Bug Fix	Inappropriate behavior of the topic links when being hovered in the Link topic
igCombo	Bug Fix	Add limitation for loadOnDemand and cascading support
igDataChart	Bug Fix	When there are multiple overlapping series then the div container gets 100% width
igDataChart	Bug Fix	Certain chart scenarios return errors on the iPad after the util defineProperty changes were made. Note: A scenario in which loading certain series or using certain features on the iPad would throw a JavaScript error has been resolved.
igDataChart	Bug Fix	Control doesn't render in IE10 RTM for Windows 7
igDataChart	Bug Fix	Series are not available in the array when added dynamically with <code>igDataChart("option", "series")</code>
igDataChart	Bug Fix	The truncation character is not correctly translated in the minified version
igEditors	Bug Fix	The igDateEditor does not support MMM and MMMM formats in edit mode
igEditors	Bug Fix	Unable to select year and month through the editor's dropdown calendar in iOS 6.0.1 devices.
igEditors	Bug Fix	Validator border line is not red if using an editor control inside of a dialog window. Note: The validation styling was being overridden by the dialog window's styles. I added a selector that makes sure the correct styling is applied even inside a dialog window.
igEditors	Bug Fix	igEditor with buttons fails to show red-error border when igValidator in error state
igFileUpload	Bug Fix	"Upload File" button should be tapped twice to open the browse dialog in IE10 on Windows 8 touch device and it doesn't work if the browser is zoomed.

igGrid	Bug Fix	igGrid does not resize properly.
igGrid	Bug Fix	numbers are not rounded properly in Internet Explorer 8.
igGrid	Bug Fix	Templating and Single Character Attributes
igGrid	Bug Fix	Hitting enter key doesn't trigger the cell editor's validation.
igGrid	Bug Fix	Column filter tooltip shows the column key instead of column header when using Advanced filtering
igGrid	Bug Fix	Column headers are misaligned in Safari when using filtering
igGrid	Bug Fix	When filtering is applied and then sort any column and there is remote paging, all of the records for the current page are sorted and rendered, no matter the applied filter
igGrid	Bug Fix	Filtering breaks with the latest release
igGrid	Bug Fix	Onblur validation works when the mouse is moved to change fields, but not when tab is used
igGrid	Bug Fix	Extra column header appears when filtering is enabled and the first column is hidden.
igGrid	Bug Fix	Exposing the data row inside the custom formatter as a parameter
igGrid	Bug Fix	No horizontal scroll bar is rendered/displayed in Internet Explorer 7
igGrid	Bug Fix	Last column is cutoff in Internet Explorer 7
igGrid	Bug Fix	Keyboard navigation does not set the focus to the selected row when virtualization is enabled. Note: Keyboard navigation should now correctly scroll the grid up and down when continuous virtualization is enabled.
igGrid	Bug Fix	Setting the groupBy before the RowSelectors feature doesn't render the checkboxes on initial load.
igGrid	Bug Fix	When sorting is enabled fixing a column applies focused style to its header.
igGrid	Bug Fix	If you rebind the grid after you show initially hidden column the cells of that column disappear and the other columns are shifted.
igGrid	Bug Fix	The moving dialog is too small in jQuery 1.9.1 and Modernizr (CDN latest version or custom build)
igGrid	Bug Fix	When width is set Deferred moving any column to the last place, the moving indicators do not remain in position
igGrid	Bug Fix	ColumnMoving throws an exception when the Filtering feature is enabled
igGrid	Bug Fix	ColumnMoving and Hiding hide wrong column after moving
igGrid	Bug Fix	When you hide a column and move the column that holds the hiding indicator, it goes with it and when you show the hidden column it appears at the wrong place.

igGrid	Bug Fix	When you move the column that holds the hiding indicator and then you show the hidden column dragging, this column throws a JavaScript error.
igGrid	Bug Fix	When the modal dialog has width bigger than grid moving it makes it go above the headers and part of it can't be reached.
igGrid	Bug Fix	When clicking advanced filtering button, press Esc then click another column's filtering icon, both filters are added.
igGrid	Bug Fix	Search and Cancel buttons in the advanced filtering dialog have the same ids
igGrid	Bug Fix	Columns are added for filtering if you open the advanced filtering dialog and click Cancel
igGrid	Bug Fix	Hitting "cancel" doesn't revert the changes made for the filtering conditions in the advance filtering dialog.
igGrid	Bug Fix	DataSourceUrl with Filtering and RowSelectors throws error in Google Chrome
igGrid	Bug Fix	When filtering through the API method you are unable to apply multiple filters through separate calls.
igGrid	Bug Fix	DataBound event is fired twice after filtering if "dataBind" is invoked explicitly
igGrid	Bug Fix	Filter options are missing when deleting filter conditions and then pressing cancel on the filter dialog
igGrid	Bug Fix	Event dataFiltered is not triggered when clicking on "Clear Filter" with remote filtering
igGrid	Bug Fix	Clearing the last remaining filtering using backspace expression causes a data rebinding (local filtering)
igGrid	Bug Fix	Cell containing HTML with TABLE element shifts the row data to the left. Note: With this fix we will support tables in an HTML template
igGrid	Bug Fix	Removing items directly form the data source doesn't work when an igGrid is bound to the knockout data source
igGrid	Bug Fix	When the grid is bound to remote data and at least one column from (the first defined) column group is hidden by default, that column's header cell is still visible while the grid is waiting for the data
igGrid	Bug Fix	Feature missing from combined Infragistics.js
igGrid	Bug Fix	MultiColumnHeaders shift column definition logic
igGrid	Bug Fix	The height is fixed and paging footer is not included in the height of the grid
igGrid	Breaking Change (API)	rowEditDialogMaxHeight sets height of dialog's field container instead of the max height of the entire dialog. Note: Changed the property rowEditDialogMaxHeight to rowEditDialogContentHeight so it matches its purpose better.
igGrid	Bug Fix	Cannot update a row using jQuery UI 1.9.1 and row edit template with specific column settings (a drop-down editor is used for one of the columns)

igGrid	Bug Fix	When fixed virtualization and selecting a row after scrolling, dismiss the focus from first selection in Firefox
igGrid	Bug Fix	When fixed virtualization and selecting a row after scrolling, apply extra focus on first selection
igGrid	Bug Fix	Sorting cannot be applied on a hidden column. Note: Sorting is not supported on hidden columns. If user tries to sort hidden columns a custom exception is thrown.
igGrid	Bug Fix	Sorting dialog doesn't look right when you sort a couple of columns in IE8.
igGrid	Bug Fix	Summaries Count value is formatted with currency format
igGrid	Bug Fix	When grid summaries are hidden by invoking the toggleSummariesRows method, the grid height is not calculated correctly
igGrid	Bug Fix	When you uncheck the Count summary of a date column the Min summary is not correct.
igGrid	Bug Fix	Updating Values does not fire updating of summary
igGrid	Bug Fix	Unable to tab between cells when edit mode is cell with jQueryUI 1.8.16 and older. Note: Before this fix is applied to fix this you should use jQueryUI 1.8.18+
igGrid	Bug Fix	Updating a record with a rowId of 0 causes the grid to re-render
igGrid	Bug Fix	Update the help information about the igGrid Updating 'deleteRow' API method - the rowId param can now be used only with primary key values.
igGrid	Bug Fix	The 'Row Deleting API' sample and demo need to be updated - the row Id selecting spin editor should list only existing primary key values
igGrid	Bug Fix	Vertical Scrollbar locks when leaving the add row and the cursor is in a text input element
igGrid	Bug Fix	Custom keydown event fails for grid editor
igGrid	Bug Fix	Deleting a row when autoCommit = TRUE will no longer cause the grid's alternate row styles to be re-rendered
igGrid	Bug Fix	When virtualization is enabled and edit mode is set to cell, row selection is lost after editing
igGrid	Bug Fix	When fixed virtualization and selecting a row after scrolling active row on first selection does not lose its active or selected style.
igGrid	Bug Fix	Header text appears as null when using a blank string in ASP.NET MVC Helpers
igGrid	Bug Fix	Grid cannot be bound to typed DataSet/DataTable
igGrid	Bug Fix	Error when binding Grid to DataTable containing DateTime column which has null values.
igGrid	Bug Fix	Chrome: When columns are set in percent values and resizing is executed some of the columns are resized incorrectly

igGrid	Bug Fix	Grid Filtering Yesterday condition doesn't work on the 1st of the month
igGrid	Bug Fix	The option DefaultDropDownWidth is not included in neither the GridWrapper (ASP.NET Helper), nor the GridModel
igGrid	Bug Fix	Error occurs when cell edit ended event is handled with multiple cell selection enabled.
igHierarchicalGrid	Bug Fix	Cannot hide a column on a child layout
igHierarchicalGrid	Bug Fix	When you hide filter from feature chooser some parts of the editors are still visible in IE7.
igHierarchicalGrid	Bug Fix	When a child layout of the igHierarchicalGrid has height, dragging can start from the header and after that if you select a cell by clicking it selection is not released.
igHierarchicalGrid	Bug Fix	The ui.row.index parameter of the rowSelectionChanging/ed events is incorrect (takes into account expanded hierarchical grid row) when group-by is enabled
igHierarchicalGrid	Bug Fix	When load on demand is true and remote features are used on child layouts the grid does not send "path" and "layout" params which causes the failure of the remote features.
igHierarchicalGrid	Bug Fix	When remote paging and remote filtering are enabled if you filter a column from a child layout and the result is from another page expanding this result makes the grid to throw a JavaScript error.
igHierarchicalGrid	Bug Fix	When remote GroupBy and remote Sorting are enabled in igHierarchicalGrid grouping a column from child layout does not work.
igHierarchicalGrid	Bug Fix	[Enabling and Configuring Grouping (igHierarchicalGrid)] The topic doesn't provide insight about the specifics of the scenario when remote GroupBy is to be used alongside with LoadOnDemand = TRUE
igHierarchicalGrid	Bug Fix	When the igHierarchicalGrid is bound to remote data, remote summaries are enabled and loadOnDemand is FALSE the summaries for child layouts are not rendered.
igHierarchicalGrid	Bug Fix	Hierarchical Grid - Checkbox Column - it is not possible to update checkbox column
igHtmlEditor	Bug Fix	HTML editor's right border is not visible
igListView	Bug Fix	igList does not navigate to local page
igListView	Bug Fix	Improper code blocks in the "Configuring Grouping (igListView)" topic
igLoader	Bug Fix	Infragistics Loader ->All Features Enabled sample-> error on opening sample
igLoader	Bug Fix	[igLoader] Data is not visualized in the igPivotDataSelector when using the igLoader
igMap	Bug Fix	Map series cannot be removed
igPivotDataSelector	Bug Fix	[igPivotDataSelector] The "update" event is thrown before the "initialize"

igTree	Bug Fix	Error in "Load on Demand Using OData" sample
igVideoPlayer	Bug Fix	If you jump forward or backward while the video is playing - "Buffering" sign appears and it never disappears
Samples	Bug Fix	The checkbox and the text are not on the same row alignment in the sample "Create PDF or XPS"
Samples	Bug Fix	Error is thrown when trying to open "Rating in a List View" sample
Samples	Bug Fix	Video Player - Bookmarks sample - adding a bookmark is not working
Samples	Bug Fix	Error in loading OData in "Different Data Sources" sample [igHierarchicalGrid]
Samples	Bug Fix	Hierarchical Grid - Row Template in igHierarchicalGrid - incorrect code snippet
Samples	Bug Fix	Sample for Basic igDialog has some errors in the BasicDialog.cshtml sample source file.
Samples	Bug Fix	Page for Data Annotation Validation sample is not opening
Samples	Bug Fix	In Editors sample Load And Save Form Values add padding between editors
Samples	Bug Fix	In Editors sample Load And Save Form Values has smaller labels compared to the editors
Samples	Bug Fix	In Editors sample Load And Save Form Values quantity field should be numeric
Samples	Bug Fix	12.1 demos are still marked as NEW
Samples	Bug Fix	[Infragistics Loader] Load Multiple Resources & All Features Enabled samples do not load
Samples	Bug Fix	Scrolling is not possible in Mobile List View samples under Firefox and Safari (desktop and iOS)
Version Utility	Bug Fix	(No Suggestions) being changed to (No Suggestions) when upgrading