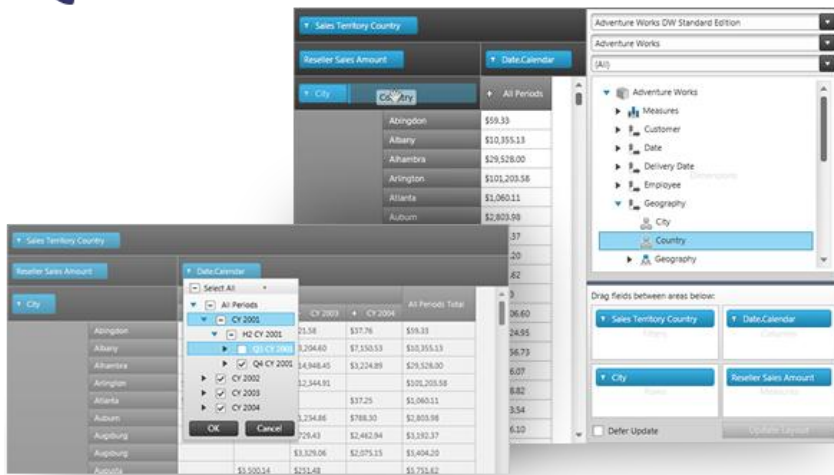


NetAdvantage[®] for Visual Studio[®] LightSwitch[™] 11.1 – Service Release Notes - June 2012



Custom shells, theme extensions and UI controls for creating code-free dashboards and data visualization in Microsoft's Visual Studio LightSwitch.

Installation

Downloading	Download NetAdvantage for Visual Studio LightSwitch here.				
Installation Prerequisites	<p>Before you install NetAdvantage for Visual Studio LightSwitch, make sure you have the following:</p> <table border="1"> <thead> <tr> <th>Prerequisite</th> <th>Description</th> </tr> </thead> <tbody> <tr> <td>Visual Studio for LightSwitch 2011</td> <td>Visual Studio LightSwitch 2011 is a development tool that helps you build business applications quickly. LightSwitch provides a simplified development environment that enables you to concentrate on the business logic instead of the application infrastructure.</td> </tr> </tbody> </table>	Prerequisite	Description	Visual Studio for LightSwitch 2011	Visual Studio LightSwitch 2011 is a development tool that helps you build business applications quickly. LightSwitch provides a simplified development environment that enables you to concentrate on the business logic instead of the application infrastructure.
Prerequisite	Description				
Visual Studio for LightSwitch 2011	Visual Studio LightSwitch 2011 is a development tool that helps you build business applications quickly. LightSwitch provides a simplified development environment that enables you to concentrate on the business logic instead of the application infrastructure.				

What's Fixed

Component	Product Impact	Description
Map	Bug Fix	DataMapping Strings can be altered in undesired way Cannot modify TabControl's content alignment when using Infragistics themes
Common	Bug Fix	Notes: Fixed an issue with alignment of TabControl's content. Now the content alignment can be controlled in any LightSwitch control.
Common	Improvement	IG Shell: there is no icon for 'Close' button and custom user button Notes: Added default icon for the Command items without assigned image.
Masked Edit	Improvement	Ability to have a percentage symbol in a MaskedEdit control