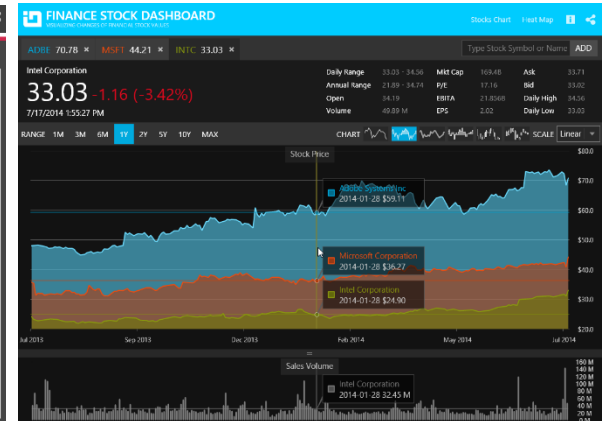
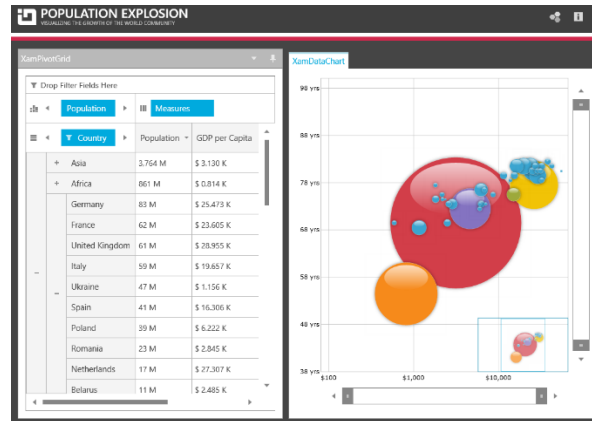
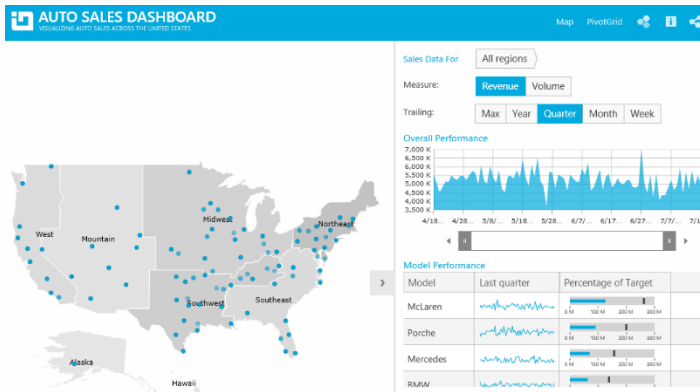




# INFRAGISTICS Silverlight 13.2 – Service Release Notes – July 2014

## Raise the Bar on Both Business Intelligence and Web UI with Infragistics Silverlight Controls.

Infragistics Silverlight controls provide breadth and depth in enabling developers to bring modern, trend-setting applications to market while shortening development time. If you need gesture/touch support, dynamic themes, and lightning fast performance in one Silverlight package, look no further.



## Installation

### Downloading

[Download Infragistics Controls for Silverlight here.](#)

## What's Changed

Components	Product Impact	Description
Excel Engine	Bug Fix	<p>ArgumentException is thrown when a specific excel file is loaded</p> <p>Notes: Fixed an issue in the Excel library where certain punctuation connector Unicode characters were incorrectly being treated as invalid in a named reference name, which could cause an ArgumentException when loading a file</p>
XamCalendar	Bug Fix	Invalid brush key message is displayed in the Output window
XamCalendar	Bug Fix	Resource not found message appears on load
XamCalendar	Bug Fix	Selection, current day, CalendarItemGroupTitle, leading and trailing days and Today button in xamCalendar are not washed in all themes
XamColorPicker	Bug Fix	Decimal digits are not fully visible on HSL and CMYK tabs of the details window.
XamComboEditor	Bug Fix	XamComboEditor has Textboxes with incorrect background when Metro theme is applied
XamComboEditor	Bug Fix	Changing the selected item of the DataGrid makes the control's selected item null
XamComboEditors	Bug Fix	The drop down is displayed away from texteditor
XamDataTree	Bug Fix	<p>NullReferenceException occurs while dragging a node and MaxDepth is set</p> <p>Notes:</p>

		Fixed an issue where a NullReferenceException was thrown when dragging a node from a child level whose depth is equal to the MaxDepth.
XamDataTree	Bug Fix	Public Func<> property causes incorrect hierarchy
		Nodes cannot be selected if you do not click on the text
		Notes: Fixed an issue where the drag over indicator element handled the user mouse input and this prevented node selection on the borders of the XamDataTreeNodeControls.
XamDataTree	Bug Fix	NullReferenceException occurs when pressing key after selected node is removed from tree.
		Notes: Fixed an issue where clearing a node's children data collection resulted in a NullReferenceException when pressing any key. The ActiveNode will now be set to null, if a children data items collection containing it has been cleared.
XamDataTree	Bug Fix	The ActiveNode will also be set to null if its parent has been collapsed.
XamDateNavigatorView	Bug Fix	CalendarItemGroupTitle is not washed in xamDateNavigator in all themes
XamDateNavigatorView	Bug Fix	Selection, current day, and days in xamDateNavigator are not washed in all themes
XamDialogWindow	Bug Fix	Context Menu items do not close when the another dialog whose RestrictInContainer property is set False is clicked.
XamDonutChart	Bug Fix	Incorrect number of SliceItems returned for the Ring of a RingSeries
XamDonutChart	Bug Fix	RingSeries appear distorted when a few Series have been added to DoughnutChart and the size of the window has been reduced
XamDonutChart	Bug Fix	Toggling the Visibility of a RingSeries doesn't affect the contents of its Legend
XamDonutChart	Bug Fix	Legend's items are not removed when removing any of the series
		IsSelected state of a RingSeries' slice does not change accordingly on slice click upon AllowSelection property value's change
XamDonutChart	Bug Fix	

		<p>Notes: The IsSelected and IsExploded properties of slices in the pie chart and doughnut chart, can be always changed and this will be reflected in the SelectedSlices and ExplodedSlices collections. Whether the selection and explosion states are displayed in the UI, depends on the AllowSliceSelection and AllowSliceExplosion values.</p>
XamGantt	Bug Fix	<p>Exception occurs in VS2010 designer when adding XamGantt with another control</p> <p>NullReferenceException occurs when trying to delete row in XamGrid in another XamGrid's TemplateColumnLayout.</p>
XamGrid	Bug Fix	<p>Notes: Fixed an issue and now TemplateColumnLayout cells/rows are not deletable. Their data context is the parent row's underlying object. So it's not defined what item should be deleted from what collection. TemplayColumLayout is practically a row's Details view so it does not make sense to be deleted. TemplateColumnlayout would not be delated despite the DeleteKeyAction set to the XamGrid or set to the TemplateColumnlayout itself.</p> <p>NullReferenceException occurs when attempting to enter Text Filter for Template Column.</p>
XamGrid	Bug Fix	<p>Notes: Fixed an issue that caused NRE. No filtering would be possible on the template colulumn. In order to filter it FilterEditorTemplate should be set to the column.</p>
XamGrid	Bug Fix	Grid hangs up on keyboard navaigation over a cell that is outside the view
XamGrid	Bug Fix	NullReferenceException occurs when resizing a group column
XamGrid	Bug Fix	Multi column filtering eliminates unchecked items from menu
XamGrid	Bug Fix	ScrollCellIntoView does not fully scroll with hidden columns
XamGrid	Bug Fix	Assert fail is displayed when dynamically changing CellControlGenerationMode property
XamGrid	Bug Fix	Grid hidden column's cells are copied when using group columns
XamGrid	Bug Fix	ConditionalFormattingCellStyle of the IG Theme sets the cell foreground to white on hover and don't reset it back to black
XamGrid	Bug Fix	Memory leak occurs when Grid has hierarchical data and page navigation

XamGrid	Bug Fix	Argument Exception occurs when applying IGTheme in design time
XamGrid	Bug Fix	ScrollCellIntoView does not scroll horizontally to desired cell
XamGrid	Bug Fix	Incalid Cast Exception occurs when binding ItemsSource
XamGrid	Bug Fix	ToString Representation of object is shown in ComboBoxColumn when EditorDisplayBehavior is in EditMode and when using an ItemTemplate
XamGrid	Bug Fix	GroupBy header in metro themes needs improvement
XamGrid	Bug Fix	CellControl's DataContext is null when applying CellControl style to a column
XamGrid	Bug Fix	NullReferenceException is thrown by ExecuteCommand method of ShowCompoundFilterDialogFilterMenuConditionalCommand
XamGrid	Bug Fix	FilterMenu cannot filter if the filter value is null or String.Empty or ""
XamGrid	Bug Fix	VerticalMargin property throws an error in design time when Metro theme is applied
XamGrid	Bug Fix	XamGrid's columns always return null for their HeaderText Property
XamGrids	Bug Fix	When ColumnLayout is overridden through the ColumnLayoutAssigned event the overridden columnLayout is missing the headers
XamInputs	Bug Fix	Value is not modified if the digit is selected with mouse
XamInputs	Bug Fix	Cannot enter digits at middle of the mask
		XamMenuItem is highlighted after switching tabs
XamMenu	Bug Fix	Notes: XamMenuItem should not get focus when XamMenu LostFocus is fired
XamMultiColumnCombo	Bug Fix	InvalidOperationException occurs with Dictionary items source
XamMultiColumnCombo	Bug Fix	Combo Editor causes user to be unable to click on anything in the application
XamMultiColumnCombo	Bug Fix	Reset Button's space is still occupied when the 'SelectedItemsResetButtonVisibility' is set to "Collapsed"
XamMultiColumnCombo	Bug Fix	Multiple items are not selected when CheckBoxVisibility is set to Visible
XamOrgChart	Bug Fix	XamOrgChart nodes are not fully visible in overview plus detail pane
XamOrgChart	Bug Fix	OrgChartNodeControl does not render properly when applying style for the OrgChart
XamOrgChart	Bug Fix	NodeArrangementStratedy of Stagger causes nodes to overlap

		StackOverflowException is thrown when using endless self-reference data.
XamOrgChart	Bug Fix	<p>Notes: Fixed an issue by adding ExcludeProperties property to the OrgChartnodeLayout class to prevent specific property names from being used for creating relations. The string property accepts a string value that can contain a number of property names, which should be separated by commas. The property does not exclude an already set Key property.</p>
		Templated percentage label on the Others Slice is not displayed when LabelPosition is InsideEnd
XamPieChart	Bug Fix	<p>Notes: A cosmetic issue with triangle seams was fixed in the GeographicScatterAreaSeries</p>
XamPivotGrid	Bug Fix	The total text in the headers doesn't change its foreground when changing the header's foreground
XamPivotGrid	Bug Fix	Adding dimension causes background thread to never finish
XamPivotGrid	Bug Fix	PivotRowHeaderCellControl and PivotColumnHeaderCellControl Foreground property is not applying in the default theme
		Cannot change size of RichTextEditor control's images
XamRichTextEditor	Bug Fix	<p>Notes: Fixed an issue in the RichTextDocument where images which only have a RenderSize and no transform were not honoring the RenderSize and were display with the image's dimensions.</p>
XamRichTextEditor	Bug Fix	Newly created row's height is not correct.
		Pressing End key, when paragraph mark is selected, is navigating to the next paragraph
XamRichTextEditor	Bug Fix	<p>Notes: Fixed an issue where pressing the 'End' key after selecting text to the end of a paragraph (i.e., a selection that ends immediately after the paragraph's paragraph mark) would improperly position the Caret at the end of the following line instead of immediately</p>

		before the paragraph's mark.
		Text alignment is applied only to the last cell.
XamRichTextEditor	Bug Fix	Notes: Fixed an issue where paragraph settings (e.g., align paragraph content center) were only being applied to the primary selection range when multiple ranges were selected.
XamRichTextEditor	Bug Fix	Paragraphs' right borders get dislocated at certain widths.
XamRichTextEditor	Bug Fix	The AfterParagraph spacing cannot be reduced once the document is loaded.
		Borders applied to specific paragraphs are displayed on the first one too.
		Notes: Fixed an issue by adding an IsShared property on all settings classes in RichTextDocument so it can be determined if they need to be cloned before modifying.
XamRichTextEditor	New Functionality	
XamSpellChecker	Bug Fix	Spell checker dialog truncated on the bottom.
XamTileManager	Bug Fix	Horizontal scrollbar appears when hiding a tile