

NetAdvantage[®] for Windows Forms Release Notes – Volume Release 13.1



Add complete usability and extreme functionality to your next desktop application with the depth and breadth our Windows Forms UI controls. NetAdvantage for Windows Forms continues to make strides in user experience with the latest Windows[®] 7 and Office[®] 2010 styles.

Installation

Downloading

[Download NetAdvantage for Windows Forms here.](#)

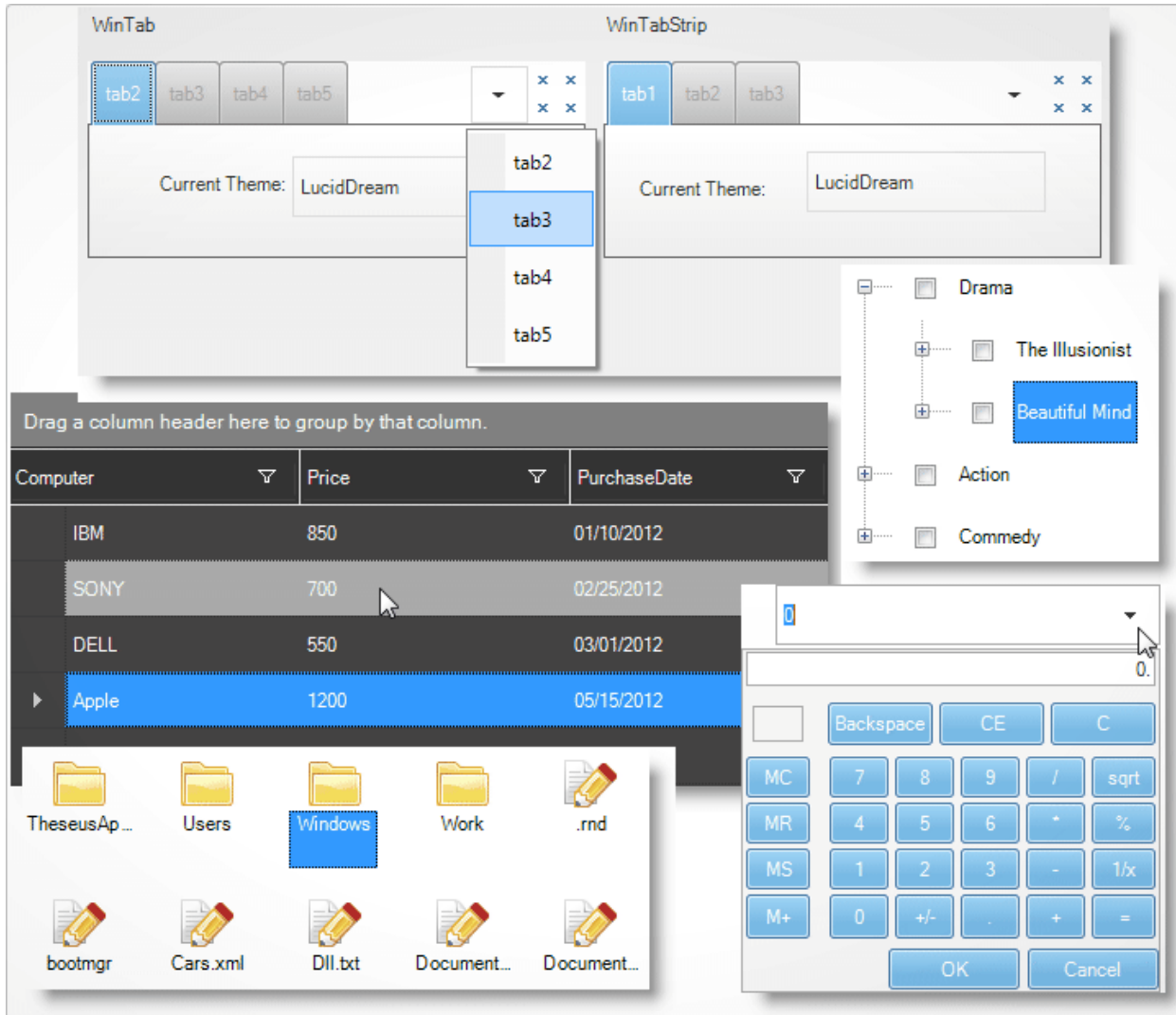
What's New

The [NetAdvantage for Windows Forms 2013.1](#) release continues to provide quality assured controls and components for your Windows Forms Development. The key new features for NetAdvantage for Windows Forms include:

Touch Support

The following is a list of the NetAdvantage touch supporting controls and components.

- Editor Controls
- Grid Control and Elements
- WinTab, WinTabstrip Control and WinTabbedMdiManager Component
- WinListView and WinTree Controls



Touch Gestures

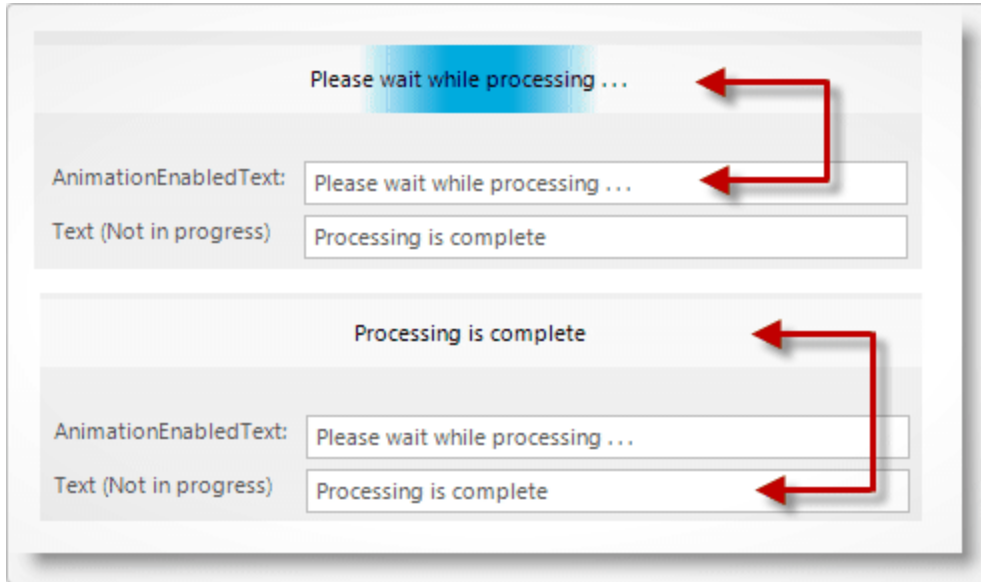
The following list contains the *NetAdvantage* touch-enabled controls with gestures support.

- *UltraGrid*
- *UltraCombo*
- *UltraTree*
- *UltraListView*

The NetAdvantage controls emulate the Windows operating system's standard user interface behavior. We apply this paradigm to support touch gestures handling our controls.

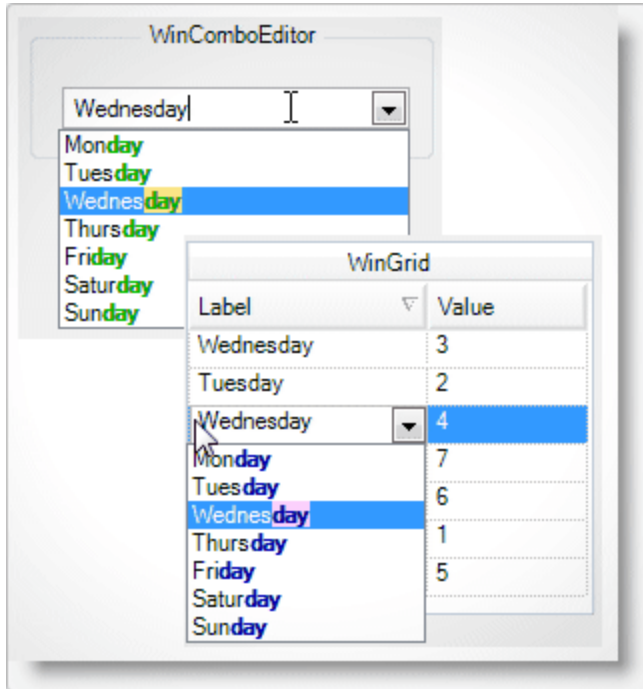
WinActivityIndicator (Displaying Text on Activity Indicator)

Prior to the product release of 13.1, the WinActivityIndicator™ did not display text indicating that the activity was in progress. It only displayed the animation in progress. The following screenshot captures the started and stopped animation with the displayed text "Please wait while processing..." and "Processing is complete".



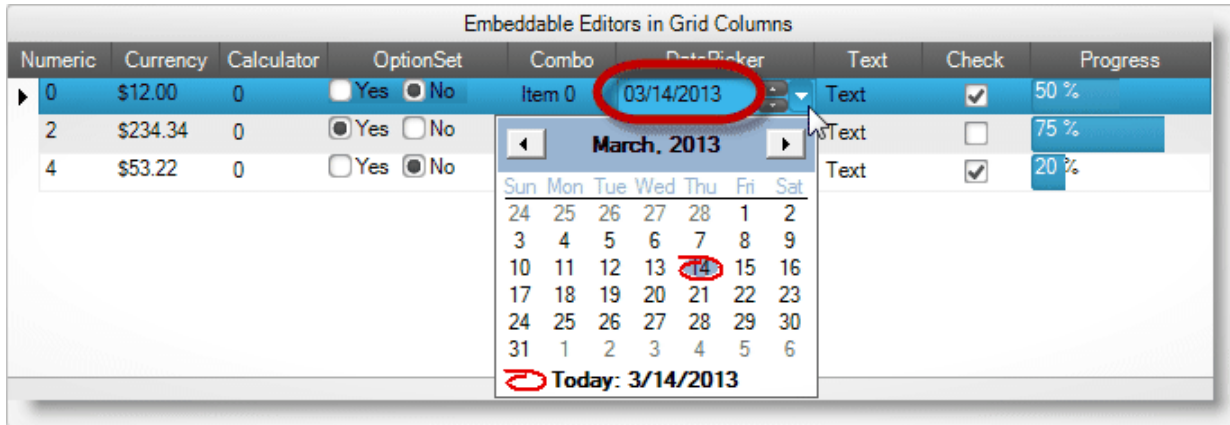
WinComboEditor (Autosuggest Highlight Appearance)

Extending the value List's capability, this allows styling and highlighting of the drop-down list of items.



WinDateTimeEditor (Prevent From Typing Into WinDateTimeEditor)

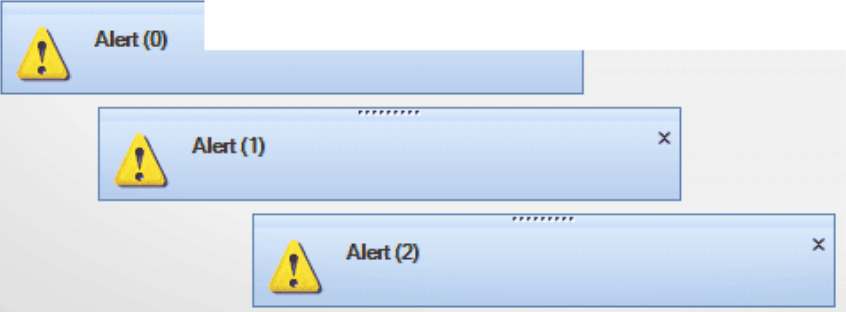
Configuring the *WinDateTimeEditor*, this provides an additional option to prevent the users from typing directly into the DateTime editor.



WinDesktopAlert (Exposing Open Alert Windows)

Exposes open alert windows and enables you to navigate through them.

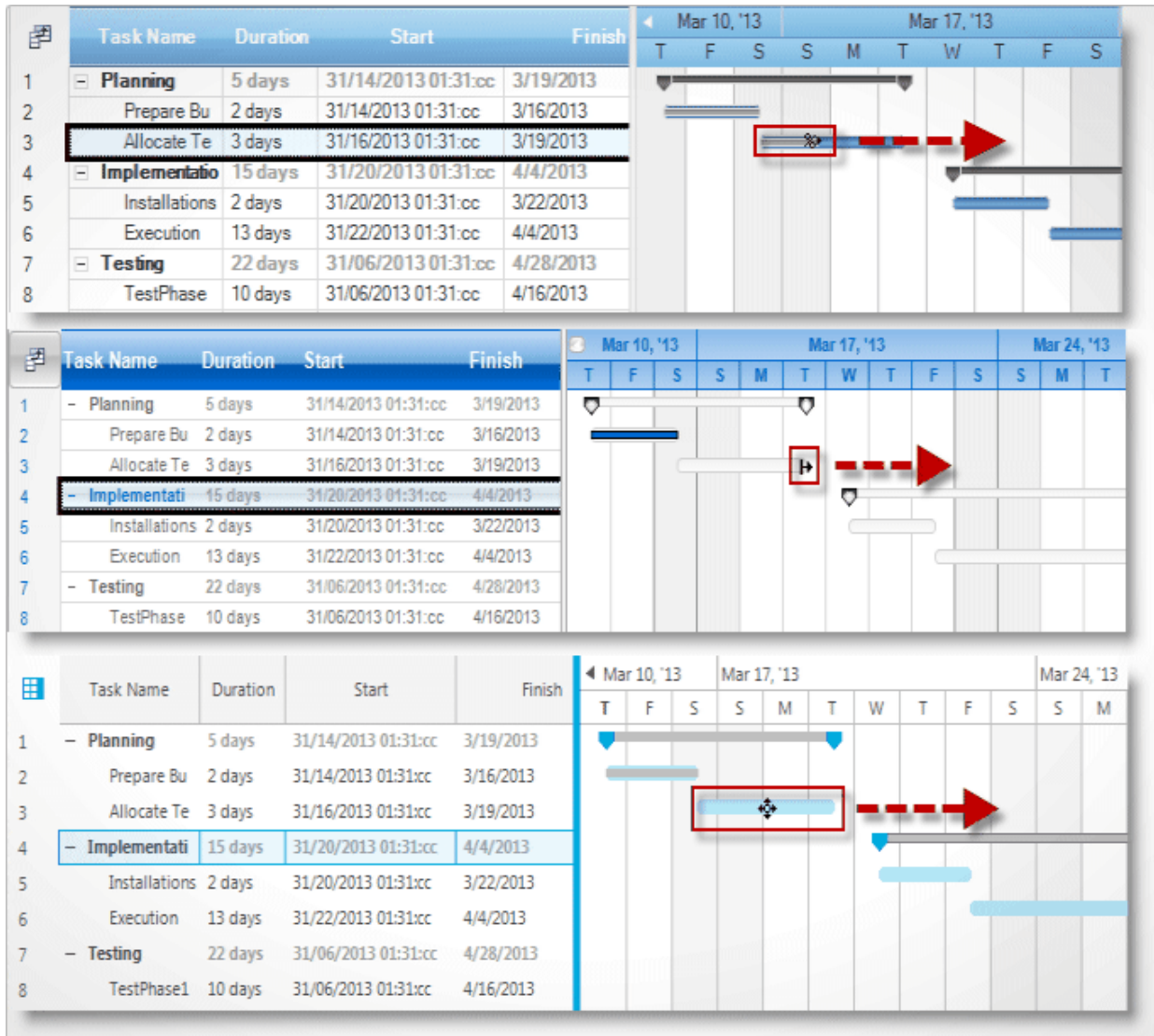
```
// Create a new instance of the UltraDesktopAlertShowWindowInfo class.
var showInfo = new UltraDesktopAlertShowWindowInfo
{
    Caption = "Alert (" + ultraDesktopAlert1.OpenWindows.Count + ")",
    ScreenPosition = ScreenPosition.Manual,
    ScreenLocation = new Point(500, 50),
    PinButtonVisible = true,
    Data = AddAppointment()
};
ultraDesktopAlert1.Show(showInfo);
```



- Contains
- CopyTo
- Count**
- Equals
- GetEnumerator
- GetHashCode
- GetType
- IndexOf
- ToString

WinGanttView (Timeline Task Positioning)

Configuring scheduled tasks' precise position and size.



WinGrid (Alternate Row Appearance for Empty Rows)

Displays empty *WinGrid* rows with alternate rows appearance.

Drag a column header here to group by that column.

Column 0	Column 1	Column 2	Column 3	Column 4
2	2	4	0	1
4	2	1	4	1
2	3	3	0	1
1	0	2	1	4
4	4	2	4	4

WinGrid (DataErrorInfo Support)

Extends the data validation support to use `DataErrorInfo`, allowing independent data validation handling from the `IDataErrorInfo` interface.

Make	Model	BasePrice	Mileage	Availability
Land Rover	Raange Rover	65000.00	0	Available
Ford	Mustang	27500.00	800	Available
BMW	Z4	35600.00	10000	Available
Jeep	Wrangler	145000.00	100	Available
Honda	Accord	!	5000	Available
Volkswagen		25780.00	100	Available

Customized Error text

WinGrid (Grouped Rows Hot Tracking Appearance)

This feature allows configuring Hot Tracked appearance on grouped rows in *WinGrid*.

Hot Track Row Appearance

Hot Track Row Selector Appearance

Hot Track Cell Appearance

Hot Track Row Cell Appearance

Hot Track Header Appearance

Hot Track GroupBy Row Appearance

Column 3 ↗

- + Column 3 : 0 (27 items)
- + Column 3 : 1 (22 items)
- + Column 3 : 2 (18 items)
- + Column 3 : 3 (12 items)
- + Column 3 : 4 (21 items)

WinGridExcelExporter (Exporting Drop-down List to Excel)

Exporting drop-down lists to Excel, for example the *WinComboEditor* embedded in the *WinGrid* containing Value List with drop-down items can be exported to Excel from the grid, and make the drop-down list available in excel.

Computer	Processor	HardDrive	Memory	Price
IBM	Intel i7	1 TB	8 GB	1400
SONY	Intel i5	750 GB	6 GB	1250
Apple	Intel i5	500 GB	4 GB	1199
Apple	Intel i3	500 GB	6 GB	999
IBM	Intel i7	1 TB	8 GB	1050

C:\Temp\Test.xls Export to Excel

	A	B	C	D	E
1	Computer	Processor	HardDrive	Memory	Price
2	IBM	Intel i7	1 TB	8 GB	1400
3	SONY	Intel i5	750 GB	6 GB	1250
4	Apple	Intel i5	500 GB	4 GB	1199
5	IBM	Intel i3	500 GB	6 GB	999
6	SONY	Intel i7	1 TB	8 GB	1050
7	DELL				
	Toshiba				

WinLabel (AutoEllipses Support)

Introduces an additional property, `AutoEllipses`, which detects and handles scenarios where the text exceeds the bounds of the control, by inserting ellipses (...) and a tooltip showing the full text.

WinMaskedEdit (Default Masks for IP and Email)

Introduces three additional input masks for IPv4, IPv6 and Email.

IPv4

`nnn.nnn.nnn.nnn`

IPv6

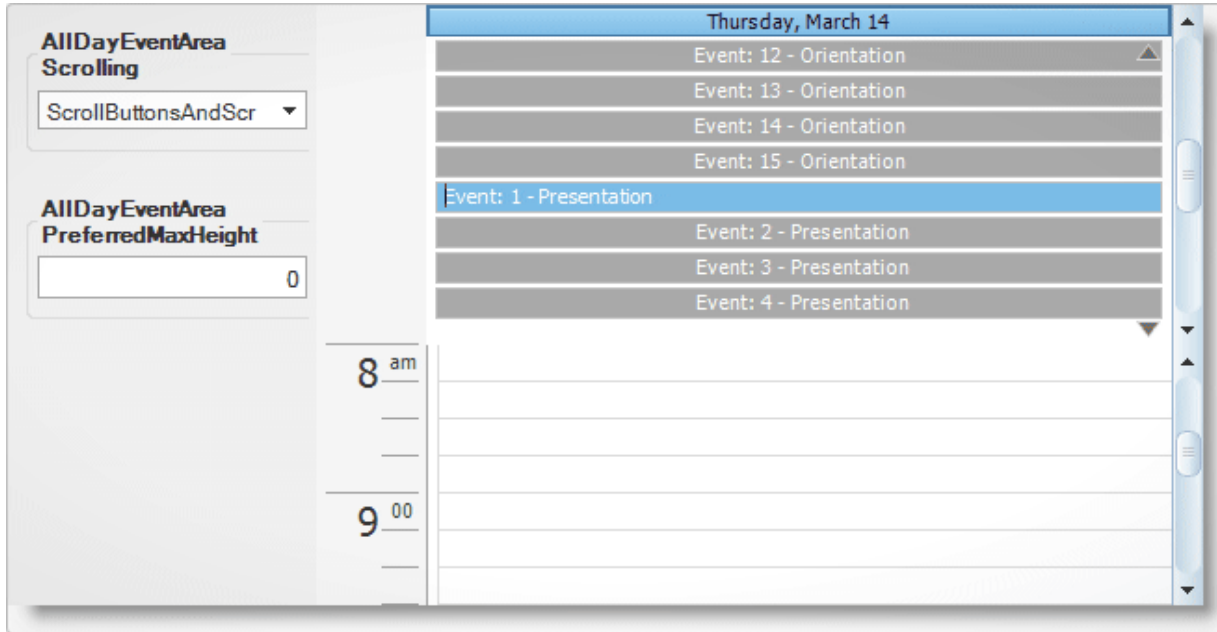
`<AAAA:AAAA:AAAA:AAAA:AAAA:AAAA:AAAA:AAAA`

Email

`<Aaaaaaaaa@Aaaaaaaaa.AAa`

WinSchedule (Scrollable AllDayEvent Area)

This feature allows you to configure the *UltraDayView* control enabling the scrollbars and scroll buttons on the AllDayEvent area with unlimited scheduled events.



Release Notes

Components	Product Impact	Description
AppStylist	Bug Fix	An event is not getting triggered when AppStylist is loaded.
AppStylist	Bug Fix	Toolbar icons do not appear with the correct style in the preview window when using the Metro.isl as a starting library.
AppStylist	Bug Fix	Exception is being thrown upon editor drop-down.
AppStylist	Bug Fix	The CheckBoxGlyphInfo property in AppStyling appears as checked when the editor style is reset to default.

		<p>Notes: The checkbox state images for the Pear theme have been changed.</p>
CodedUI\WinGrid	Bug Fix	<p>The Name property of the cell does not return a value.</p> <p>Notes: Added a custom property to the cell UIA provider called "DisplayText", which will contain the on-screen text instead of the Value (which is what the Text property displays).</p>
Infragistics Excel Engine	Bug Fix	<p>The Excel Engine retrieves incorrect value from an Excel spreadsheet.</p> <p>Notes: Fixed the issue in the Excel library where the data table cells were calculated incorrectly. The source cells were referencing the input cells indirectly (by using some other cell or named reference, which also used the same formula of the input cells).</p>
Infragistics Excel Engine	Bug Fix	<p>Unable to retrieve the CellValue and Formula properly.</p> <p>Notes: Fixed the issue in the Excel library to prevent from returning null value, while requesting the cell Formula within a data table.</p>
Infragistics Excel Engine	Bug Fix	<p>Charts in Excel are rendering incorrectly.</p> <p>Notes: Fixed the issue in the Excel library to prevent open file error in Microsoft Excel, where the charts perform round-tripped in 2003 format. Also ensured that the chart data refers to a correct worksheet.</p>
Infragistics Excel Engine	Bug Fix	<p>The cell formatting is affected after Tables are removed.</p> <p>Notes: Fixed the issue in the Excel library to ensure the correct formatting is preserved in cells after removing the tables.</p>
Infragistics Excel Engine	Bug Fix	<p>Invalid formula error when exporting the grid (with formula) that uses the DBNull function</p>

		as an argument to another function.
		Notes: Fixed the issue in the Excel library ensuring that the formula with missing argument did not contain any whitespace character, as in =IF(X,Y,).
Infragistics Excel Engine	Bug Fix	FormulaParseException occurs when attempting to load an xlsx file.
		Notes: Fixed the issue in the Excel library to prevent FormulaParseException while loading of certain XLSX files with named references in the workbook.
Infragistics Excel Engine	Bug Fix	An exception is thrown when loading certain Excel files. More descriptive error message is needed.
Infragistics Excel Engine	Bug Fix	Images with .wmp and .emp extensions are not exported to Excel.
		Notes: Fixed the issue in the Excel library to correctly load WMF files in Excel 2003, and WMF and EMF files in Excel 2007.
Infragistics Excel Engine	Bug Fix	An UltraCalcException is thrown when adding a table on top of the cells with formulas.
Infragistics Excel Engine	Bug Fix	Automatic Font Sort is not working correctly.
		Notes: Fixed the issue with font sorting and filtering where the font WorkbookColorInfo values were different from the sort/filter condition, while the resolved RGB color values were the same.
Infragistics Excel Engine	Bug Fix	NullReferenceException occurs when loading Excel file referencing remote data.
		Notes: Fixed the issue in the Excel library to prevent NullReferenceException while loading an Excel 2003 file with add-in functions.
Infragistics Excel Engine	Bug Fix	Stack Overflow is returned during SetValuesFormula method call.

		<p>Notes: Fixed the issue in the Excel library to prevent Stack Overflow exception when setting the values of a ListDataValidationRule in a culture, which used comma (,) as a decimal separator.</p>
Infragistics Excel Engine	New Functionality	<p>Support for Excel 2013 Strict xlsx format (ISO/IEC 29500 Strict).</p> <p>Notes: Added support in the Excel library for the Strict Open Xml Format (ISO/IEC 29500 Strict). There is now a WorkbookFormat.StrictOpenXml value.</p>
Infragistics Excel Engine	Bug Fix	<p>An error message is displayed after a document is loaded and saved.</p> <p>Notes: Fixed the issue in the Excel library to prevent an error message where saving a file that contained a custom view whose selected worksheet was deleted or hidden. This would take place when opening the file in Microsoft Excel.</p>
Infragistics Excel Engine	Bug Fix	<p>XmlException is raised when loading an excel file.</p> <p>Notes: Fixed an issue with the Excel library where loading an XLSX files caused an XmlException.</p>
Infragistics Excel Engine	Bug Fix	<p>The auto shape area is filled automatically upon save.</p> <p>Notes: Fixed an issue with the Excel library where shapes without fills in a workbook were loaded as filled.</p>
Infragistics Excel Engine	Bug Fix	<p>FormulaParseException with "Sheet name is wrong" error message is raised on loading an Excel file. This happened when the file had a PrintArea definition and the worksheet name contained Japanese characters.</p> <p>Notes: Fixed an issue with the Excel library allowing "Katakana" characters in unquoted worksheet names of formulas.</p>

Infragistics Excel Engine	Bug Fix	Excel named reference names do not allow Unicode digits. Notes: Fixed an issue with the Excel library to support unicode digit characters in named reference names.
Infragistics Word Library	Bug Fix	IG Word Engine: Unable to open docx generated files through OpenOffice.
WinActivityIndicator	Bug Fix	Activity Indicator background gradient transition is unevenly rendered.
WinCalcManager	New Functionality	An UltraCalc exception is thrown for custom Excel.CalcEngine functions with Cyrillic name. Notes: Added support for unicode function names in the UltraCalculationManager and XamCalculationManager.
WinCalendarCombo	Bug Fix	Pressing an escape key on the keyboard causes an exception.
WinCalendarCombo	Bug Fix	A System.Exception is raised when selecting a date from the dropdown.
WinCalendarInfo	Bug Fix	GetAppointmentsInRange(DateTime, DateTime, true) method fails to return appointments for non-visible owners.
WinCalendarInfo	Bug Fix	Setting the SaveSettingsInfoCategories property to All in Designer causes an Identifier expected error.
WinCalendarInfo	Bug Fix	BeforeInvokeAppointmentAction event fails to get raised if one of the occurrences in a series is deleted.
WinCalendarLook	Bug Fix	The WeekView appearance setting did not apply correctly cross year of week.
WinChart	Bug Fix	The Y axis in Polar chart appears thicker.
WinChart	Bug Fix	The rotated labels on X-axis do not display properly when only one datapoint is available.
WinChart	Bug Fix	Outer circle is missing from Polar Chart.
WinChart	Bug Fix	Adding data dynamically caused ArgumentOutOfRangeException. Notes: The main cause of the exception was the events handling based off of MouseInteractions that holds onto a previously interacted Primitive so that it can raise the appropriate exiting

		<p>events. When you change the DataSource, and the new DataSource does not contain the old primitive's row/column, it would cause an OutOfRange exception for certain chart types. This was corrected by: Adding a check in an internal method GetChartInfoFromPrimitive if the primitive's row/column was out of range, and returning null, thus ignoring and later overwriting the old primitive with the new primitive.</p>
WinChart	Bug Fix	<p>The colors of the scatter point should be different based on their groups.</p> <p>Notes: Added a condition in ScatterLineChart's GetPE(GetPaintElement) internal method. Without this condition, it was treating it as if the RowsAndColumns were swapped, which was inaccurate.</p>
WinChart	Bug Fix	Description does not appear for 'StrokeAlignment' property.
WinChart	Bug Fix	The image in PDF format does not match with the visible chart graphics.
WinChart	Bug Fix	<p>Some of the bars on the chart are hidden when its column value is set with larger value than its RangeMax.</p> <p>Notes: At one point we took an approach into consideration by using the calculated area of a column as an integer, and compared in such way that if the area was less than 2, the column would not draw. The issue with this approach was that when the area was larger than the MaxValue, it would sometimes cause to store a negative value. We changed the logic to avoid the issue with negative value, and produced the same effect.</p>
WinChart	Bug Fix	The Axis Margin in the smart tag is not working properly
WinChart	Bug Fix	RenderPdfFriendlyGraphics() takes longer to execute when exporting to PDF.
WinChart	Bug Fix	When custom color models settings are applied on the step chart, the series color of null section appears incorrectly.
WinChart	Bug Fix	The first data point is drawn larger than the rest of the data points. This happens when the first column is set with non-null value, and the second column is set to null.
WinCheckEditor	Bug Fix	The Tree cell with CheckEditor displays with incorrect appearance.
WinCombo	Bug Fix	A NullReferenceException is raised upon drop down.

		<p>Notes: This bug was caused by the implementation of UIAutomation for CodedUITests. As a temporary workaround, if you are not using CodedUITests, you need to turn off the CodedUITest support using the following code:</p> <pre>UltraControlBase.UIAutomationForCodedUITestingEnabled = false</pre>
WinCombo	Bug Fix	An ArgumentException error is raised when clearing the BindingList.
WinCombo	Bug Fix	The DropDown search with LoadStyle set to LoadOnDemand, causes StackOverflowException.
WinCombo	Bug Fix	NullReferenceException occurred when setting the DataSource property to null.
WinComboEditor	Bug Fix	The FilterMode's "Contains" option fails to recognize all contained strings.
WinDataSource	Bug Fix	A "Key not found" exception is raised with Turkish culture.
WinDayView	Bug Fix	NullReferenceException is thrown when canceling the resizing while moving the appointment.
WinDockManager	Bug Fix	Unpinned tab area is not displayed if ContainerControl is used as HostControl.
WinDockManager	Bug Fix	The Navigator does not display properly with VisualStudio2008 styles.
WinDockManager	Bug Fix	Explorer bar controls do not reflect the font changes applied to the DockManager after the LoadComponentSettings method is called.
WinEditors	Bug Fix	Autosizing a grid column does account for the InkButton.
WinEditors	Bug Fix	Specific fonts render incorrectly.
WinExpandableGroupBox	Bug Fix	Japanese string "Kanji" is wrapped when the HeaderPosition is set to "RightOnBorder".
WinExplorerBar	Bug Fix	Shortcut keys fail to respond to the Navigation Pane Options menu.
WinFormattedTextEditor	Bug Fix	The SpellCheker's squiggle line is too close to the text.
WinFormattedTextEditor	Bug Fix	The EditInfo.SelectionStart doesn't return the correct value when the text contains newlines.
		Notes:

		<p>The SelectionStart property was not intended to match up to the Text property. SelectionStart deals with valid cursor positions only, so when you have text with a
 Tag in it, the
 represents a single caret position, and when you translate the Value into Text, it becomes "\r\n", which means that it holds 2 positions.</p> <p>We have added a new method to the EditInfo called GetSubstring. This method is similar to the Substring method on System.String. It takes the starting index and an optional length, and returns the text at that point. It will correctly handle the case where you pass in the SelectionStart as the starting index.</p>
WinFormattedTextEdit or	Bug Fix	Same display text yield to different selected text in different editors.
WinFormattedTextEdit or	Bug Fix	<p>ApplyStyle method requires performance improvement.</p> <p>Notes: Two new methods have been added to UltraFormattedTextEditor: BeginUndoTransaction EndUndoTransaction These methods allow multiple operations to be combined into a single operation on the undo stack (or for the operations to be ignored for the undo stack), which will greatly improve performance when performing multiple "undo" operations.</p>
WinFormManager	Bug Fix	When the icon of a maximized window on the second monitor is clicked, the system menu shows up on the first monitor.
WinFormManager	Bug Fix	The caption buttons become invisible when the form is inactive and MdiChild.
WinFormManager	Bug Fix	When "IsGlassSupported = True", it produces additional Form Buttons.
WinForms\Installers	Bug Fix	An incorrect error message is shown when NetAdvantage is installed on machine with .NET version of earlier than 4.0.
WinGanttView	Bug Fix	Chart area doesn't align with Grid area when deleting tasks after scroll.
WinGanttView	Bug Fix	Task relation does not show when tasks are added in the code behind, and child task's AllProperties info is added.
WinGanttView	Bug Fix	When a given task is deleted by user interaction, an unrelated record is deleted from the bound DataTable.

WinGanttView	Bug Fix	Task hour and minutes are being reset when day field is modified.
WinGanttView	Bug Fix	Checkbox in the header of a boolean column remains unaffected when checked.
WinGanttView	Bug Fix	The GanttView column doesn't show when its VisiblePosition is changed.
WinGauge	Bug Fix	Unable to use presets via the visual Studio designer.
WinGrid	Bug Fix	Some of the resolved properties are shown in the property grid.
WinGrid	Bug Fix	Unable to select specific a cell.
WinGrid	Bug Fix	Summary rows are not being generated for child groups when the grid is printed.
WinGrid	Bug Fix	The "NoRowsInDataSource" and "NoVisibleRows" messages are displayed incorrectly.
WinGrid	Bug Fix	<p>An ArgumentException is thrown upon binding with CLR4.5.</p> <p>Notes: This exception was caused by the changes in .Net Framework CLR4.5. The BindingManager.GetItemProperties method now returns all of the properties of a base interface in addition to the properties of the derived interface. So if the derived and base interfaces each have a property with the same name, it results with a duplicate key. We will remove the duplicate keys after retrieving the PropertyDecriptors from the BindingManager. Please note that the fix for this issue applies to the duplicates only. There is still a change in behavior, since the base class properties that previously were not exposed by the BindingManager, will now show up in bound controls.</p>
WinGrid	Bug Fix	Error occurs when loading an xml layout.
WinGrid	Bug Fix	Setting the BorderStyleEmptyMessageRow property causes a Serialization issue.
WinGrid	Bug Fix	When the BeforeExitEditMode event is cancelled for cells that use UltraControlContainerEditor, the event is not triggered when the Tab Key is pressed second time.
WinGrid	Bug Fix	Hiding the nested rows causes the application to become unresponsive.
WinGrid	Bug Fix	DateTime records are filtered out by a string.
WinGrid	Bug Fix	<p>Unable to localize operator string in the Custom Style Properties window.</p> <p>Notes: The dialog will now correctly use the resources strings in the SupportDialogs assembly:</p>

		ConditionalFormatting_Operator_Equals ConditionalFormatting_Operator_NotEquals ConditionalFormatting_Operator_LessThan ConditionalFormatting_Operator_LessThanOrEqualTo ConditionalFormatting_Operator_GreaterThan ConditionalFormatting_Operator_GreaterThanOrEqualTo ConditionalFormatting_Operator_Like ConditionalFormatting_Operator_Match ConditionalFormatting_Operator_NotLike ConditionalFormatting_Operator_DoesNotMatch ConditionalFormatting_Operator_StartsWith ConditionalFormatting_Operator_DoesNotStartWith ConditionalFormatting_Operator_EndsWith ConditionalFormatting_Operator_DoesNotEndWith ConditionalFormatting_Operator_Contains ConditionalFormatting_Operator_DoesNotContain
WinGridExcelExporter	Bug Fix	A "KeyNotFoundException" is thrown when exporting the grid with hidden columns of the first band, and header placement of the second band is set to "FixedOnTop".
WinGridExcelExporter	Bug Fix	NullReferecneException is being thrown when exporting the UltraGrid to excel.
WinGridExcelExporter	Bug Fix	Performance decrease is observed when exporting to Excel.
WinGridExcelExporter	Bug Fix	<p>Exporting the UltraGrid asynchronously fails with a progress message indicating that it is complete .</p> <p>Notes: The fix here is that the CancelAsynchronousExport method on the grid now works correctly when it is called from inside the AsynchronousExportError event. This was not working previously.</p> <p>A better approach, however, is to make sure that the file is not locked before beginning the export process. This approach does not consume processing time exporting it, only to fail when attempting to write the file.</p>

		<p>To do this, use FileStream for exporting using the following code example:</p> <pre> FileStream fileStream = new FileStream(fileName, FileMode.CreateNew); Workbook wb = new Workbook(WorkbookFormat.Excel2007); ultraGridExcelExporter1.ExportAsync(ultraGrid1, wb); wb.Save(fileStream); </pre> <p>If the file is locked, then the call to the FileStream constructor will raise an exception, which can be caught and handled before the export process begins.</p>
WinGridExcelExporter	Bug Fix	The exporting process raises "System.InvalidOperationException" exception.
WinMaskedEdit	Bug Fix	Right-most character of the text rendered incorrectly (positioned lower) in Windows 8.
WinSchedule	Bug Fix	Setting a reoccurrence for the Appointment causes NullReferenceException.
WinSchedule	Bug Fix	A " System.NullReferenceException was unhandled" occurred when trying to access the appointment.Recurrence.Description before adding the appointment in appointment collection.
WinSpellChecker	Bug Fix	<p>Unnecessary list of suggestions are generated.</p> <p>Notes: The Suggestions collection will be built lazily. This will allow the suggestions to be populated when requested based on the Suggestions property upon error.</p>
WinTabbedMdiManager	Bug Fix	The form icon, used with UltraFormManager, disappears when an MDI tab is deactivated or switched to another tab.
WinTimeLineView	Bug Fix	When dragging an appointment to the right side, the vertical scroll starting location is influenced by OwnerHeader width.
WinToolbarsManager	Bug Fix	Key value is not provided in the exception when an invalid key is given to collection derived from KeyedSubObjectsCollectionBase.
WinToolbarsManager	Bug Fix	Toolbar jumps when it is being dragged, while the NavigationToolbar is visible.
WinToolbarsManager	Bug Fix	Using key tips (Alt + 'S') navigation causes argument exception.
WinToolbarsManager	Bug Fix	The PopupGaleryTool changes its display, when closing the CustomizationProvider dialog.
WinToolbarsManager	Bug Fix	The PopupColorPickerTool in QuickAccessToolbar changes the focus incorrectly.

WinToolbarsManager	Bug Fix	The ToolClick Event is raised while hovering the mouse over disabled tool and pressing the spacebar.
WinToolbarsManager	Bug Fix	Clicking on 'More colors...' of Color picker closes the backstage.
WinToolbarsManager	Bug Fix	RibbonCustomization: Resetting the selected tab removes the merged tools from the RibbonLayoutView.
WinToolbarsManager	Bug Fix	An "OutOfMemoryException" is thrown when the mouse is moved over a tool in ribbon, while fast forwarding a video in a web browser control.
WinToolbarsManager	Bug Fix	The content tools of a PopupTool do not begin rendering at the top of the Backstage.
WinTree	Bug Fix	Assigning new data source to the BindingSource of the component didn't take affect displaying the items immediately.
WinTree	Bug Fix	Hiding the last node, while set to ScrollToLastItem causes all nodes to be hidden.
WinTree	Bug Fix	The child nodes do not show when the parent node's key is modified.
WinTree	Bug Fix	Some nodes disappear from view, and the vertical scroll thumb does not display. Calling BringIntoView method does not bring the hidden nodes into view.
WinTree	Bug Fix	Selecting a row which was not previously expanded causes an unhandled exception.
WinTree	Bug Fix	An item can't be selected from the OptionSet when the OptionSet control is placed in a Tree node with a FreeForm mode.
WinValidator	Bug Fix	A memory leak was observed after closing the form, which contained a WinValidator control.