

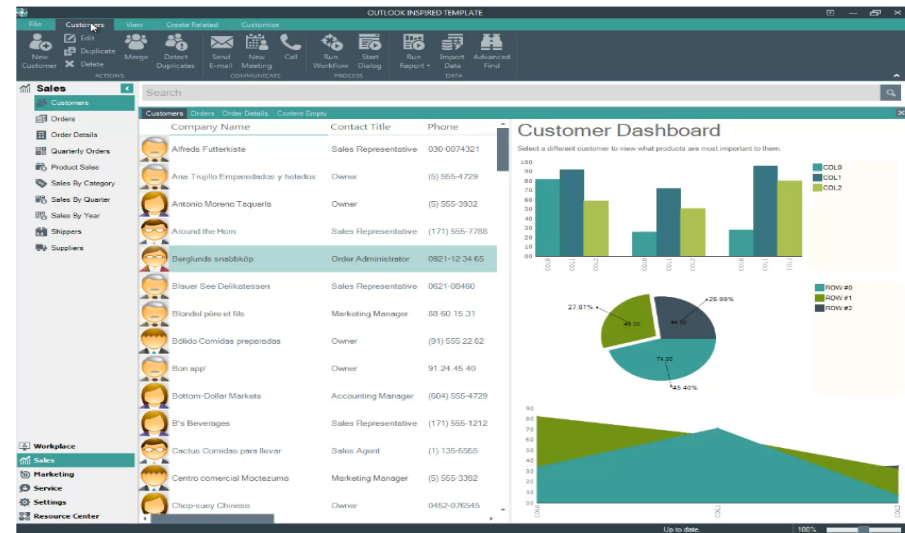
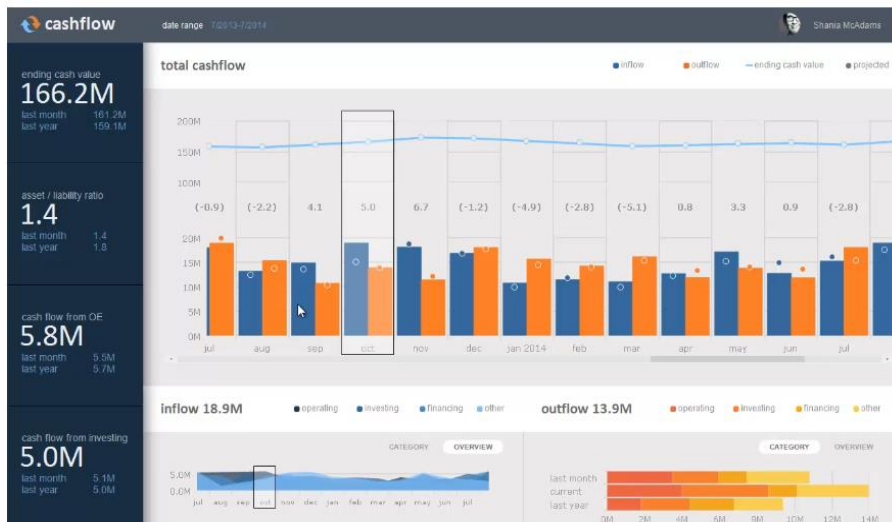


# INFRAGISTICS WINDOWS FORMS – 15.1

## Service Release Notes for June 2015

### Raise the Bar on Both BI and Desktop UI with Infragistics Win Forms Controls

Infragistics Windows Forms controls provide complete usability and extreme functionality to your next desktop application. Ensure app adoption when you create the experiences your customers already know, with Microsoft-inspired features that mimic Word, Excel, and Outlook



## Installation

<b>Downloading</b>	<a href="#">Download Infragistics Controls for WinForms here</a>
--------------------	--

## What's Changed

Component	Product Impact	Description
WinChart	Bug Fix	UltraChart SaveTo method image scales the fonts incorrect
WinChart	Bug Fix	RenderPdfFriendlyGraphics doesn't render the labels for Composite Charts
WinChart	Bug Fix	Loading presets doesn't work with inherited series
WinChart	Bug Fix	System.ArgumentException is thrown when Brushes.Transparent is referenced after the chart is created.
WinCheckEditor	Bug Fix	Control is not dpi aware when using higher dpi(144 dpi)
WinCombo	Bug Fix	<p>System.ArithmeticException on hover</p> <p><b>Notes:</b> Note that this is not a bug in the Infragistics UltraCombo. The sample project is doing something (probably an API call) that is changing the behavior of floating point operations in DotNet. Normally, dividing by 0F returns a result of float.NaN. After running the opaque code in the sample, it returns an exception, so the environment has been changed by something that did not properly clean up after itself. However, since this is very simple for us to detect and avoid an exception, we have done so in this one particular place in your code. The same exception could easily occur elsewhere in some other code in the future.</p>
WinComboEditor	Bug Fix	Child forms become unresponsive when changing theme after combo editor is dropped down

WinControlContainer	Bug Fix	ApplyOwnerAppearance should be virtual <b>Note:</b> The ApplyOwnerAppearance method of the Infragistics.Win.ControlContainerEditor class is now virtual.
WinDateTimeEditor	Bug Fix	Does not accept new value with Japanese regional settings
WinDockManager	Bug Fix	Unpinned tab still interact with mouse movement even after display modal dialog when UnpinnedTabHoverAction = None
WinForms	Bug Fix	ArgumentException occurs when closing a window that has some IG controls if Protector Suite QL which is a fingerprint reader software is installed on the PC.
WinGrid	Bug Fix	Excel filter dialog does not show vertical scroll bar
WinGrid	Bug Fix	Black line is drawn out of the grid while resizing the column on system with DPI set above 125%
WinGrid	Bug Fix	Column header is not accounted for when calculating auto resize width for hidden columns
WinGrid	Bug Fix	PerformAutoResize calculates column width incorrectly for bolded text when ColumnStyle is Double
WinGrid	Bug Fix	Tabbing between cells in UltraGrid does not work when the grid is splitted by using ColScrollRegion. <b>Note:</b> Note that tabbing across ColScrollRegions is not (and never had been) supported. The intended behavior here is for the tab key to navigate only within the current active ColScrollRegion, and with this fix, this is now working as intended.
WinGrid	Bug Fix	Tooltip in DateTime column has no text when using specific theme
WinOptionSet	Bug Fix	[StackOverflowException] Crash occurs when setting the CheckedIndex in the ValueChanged Event
WinPictureBox	Bug Fix	wmf is drawn at wrong position
WinTabControl	Bug Fix	Deleting a tab with a shared ribbon from the designer causes the ribbon to be removed in the rest of the tabs
WinTabControl	Bug Fix	Unhandled exception occurs when Tabs.Clear() method is called while the last tab is selected by code.
WinToolbars	Bug Fix	Quick Access Toolbar tooltips contain ampersand
WinToolbarsManager	Bug Fix	Form Icon gets clipped when ImageSizeSmall is set to 32x32
WinToolbarsManager	Bug Fix	ArgumentException parameter is not valid exception is thrown
WinToolbarsManager	Bug Fix	Merging several instances the same child form will not resolve the RibbonTab's caption based on the active child tab
WinToolbarsManager	Bug Fix	[Merged Ribbon] Tools are right aligned within an MDI application
WinToolbarsManager	Bug Fix	Unhandled exception encountered when using a specific combination of tabs' visible index and form size

WinTree

Bug Fix

Indeterminate CheckState is not calculated correctly when NodeStyle is SynchronizedCheckbox