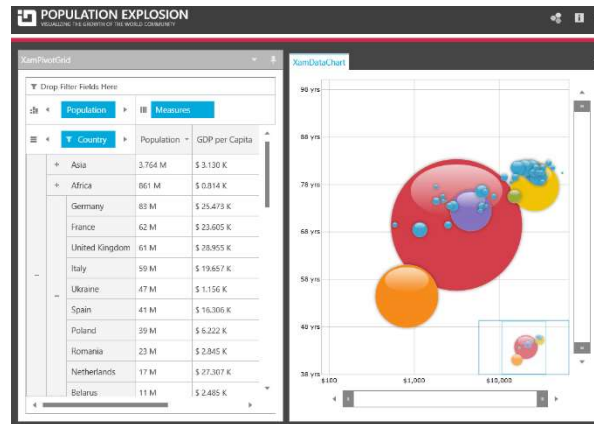
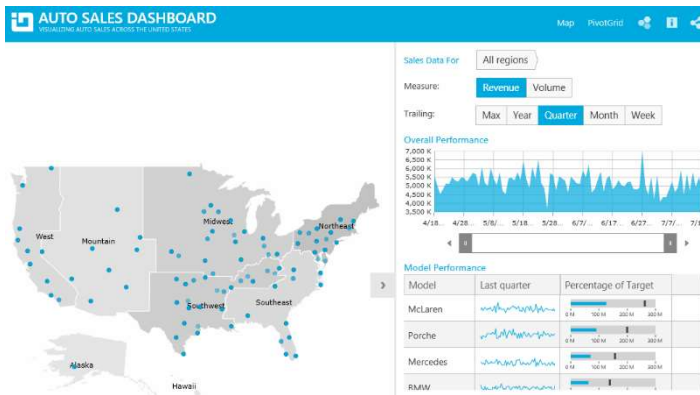




INFRAGISTICS WPF 21.2 – Service Release Notes – July 2022

Raise the Bar on Both BI and Desktop UI with Infragistics WPF Controls

Infragistics WPF controls provide breadth and depth in enabling developers to bring modern, trend-setting applications to market while shortening development time. If you need gesture/touch support, dynamic themes, and lightning fast performance in one WPF package, look no further.



Installation

Downloading	Download Infragistics Controls for WPF here.
--------------------	--

What's Changed

ID	Component	Product Impact	Description
273988	ComboEditor	Bug Fix	XamComboEditor validation dialog ToolTip does not disappear
274175	DataChart	Bug Fix	EnhancedIntervalPreferMoreCategoryLabels when labels of different sizes are used too many labels are displayed resulting in cut off labels
273980	DataChart	Bug Fix	Average summary should be calculated based on total number of items not total number of non-null items
273685	DataChart	Bug Fix	Polar Series throws NullReferenceException when mouse is over chart when initially displayed
273913	DataChart	Bug Fix	Labels are drawn inside the axis when series is added at runtime A scenario where adding polar/radial series at runtime with the zoombars enabled could initially show the content offset was resolved.
273914	DataChart	Bug Fix	Axes are incorrect when changing gap at runtime or adding additional series A scenario where adding the polar/radial series at runtime with the zoombars enabled could cause content to initially be offset was resolved.

273972	DataChart	Bug Fix	Argument out of range exception (Ticks must be between DateTime.MinValue.Ticks and DateTime.MaxValue.Ticks.) throw when hovering over data point with categoryDateTimeXAxis / TimeXAxis
273977	DataChart	Bug Fix	Legend does not show label when hovering over point in radial series (category angle axis)
273984	DataChart	Bug Fix	Legend is not initially displayed
273985	DataChart	Bug Fix	Legend displayed NaN for unknown values
274087	DataChart	Bug Fix	Using data legend/tooltip with polar series throws null reference exception
274088	DataChart	Bug Fix	Legend for financial series should show "C" label when DataLegendLabelMode is set to Visible
274136	DataChart	Bug Fix	Style Series Row event is not populating Series Title in DataLegendStylingRowEventArgs
274185	DataChart	Bug Fix	Shape chart throws System.InvalidCastException: Unable to cast object of type 'Infragistics.Controls.Charts.NumericYAxis' to type 'Infragistics.Controls.Charts.NumericXAxis'
274283	DataChart	Bug Fix	Binding chart to shapefile throws error : "Method may only be called on a Type for which Type.IsGenericParameter is true. A scenario where the shape chart was unable to bind against shp files was resolved.
273869	DataTree	Bug Fix	Removal and inserting child nodes sometimes results in a duplication of nodes
273903	MaskedText	Bug Fix	Selected text is unexpectedly restored although it is once deleted by typing Japanese composition string.
274096	RichTextEditor	Bug Fix	XamRichTextEditor wrong characters are being mis-represented
274205	TextEditor	Bug Fix	Text is clipped when display settings are 1920x1080, 150%.
273700	TreeGrid	Bug Fix	StackOverflowException after resizing a column

