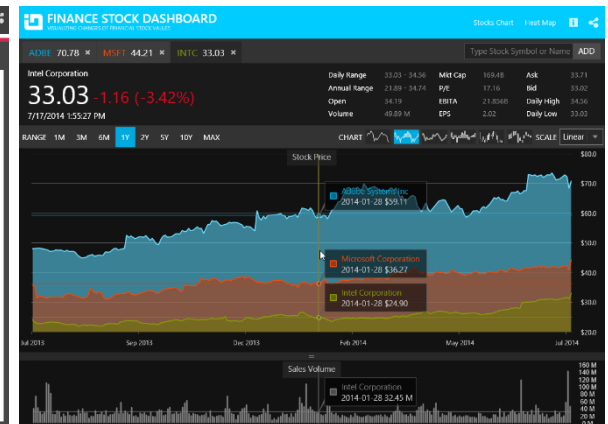
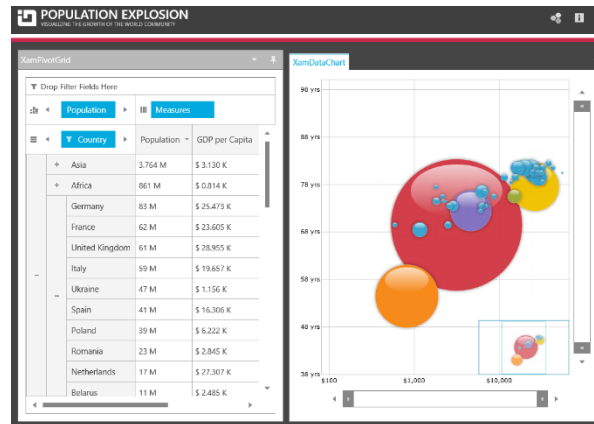
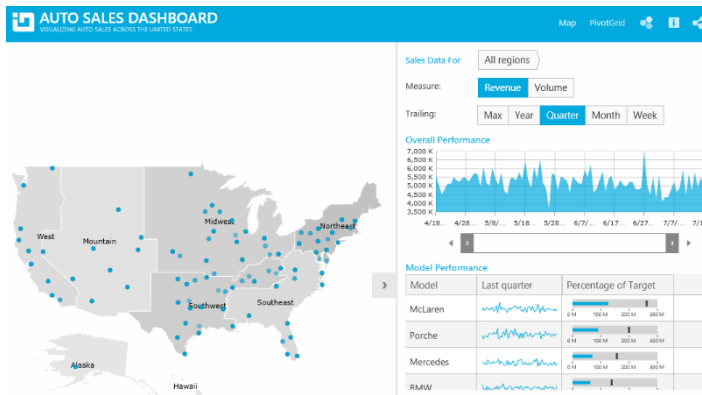




# INFRAGISTICS WPF 17.1 – Volume Release Notes – 2017

## Raise the Bar on Both BI and Desktop UI with Infragistics WPF Controls

Infragistics WPF controls provide breadth and depth in enabling developers to bring modern, trend-setting applications to market while shortening development time. If you need gesture/touch support, dynamic themes, and lightning fast performance in one WPF package, look no further.



## Installation

<b>Downloading</b>	<a href="#">Download Infragistics Controls for WPF here.</a>
--------------------	--

## What's New

Component	Feature Name	Descriptions
<b>xamSchedule</b>	Royal Dark Theme for xamSchedule	There is now a Royal Dark Theme for all views of the xamSchedule control.
<b>xamDiagram</b>	Restricting User Interactions	The xamDiagram control now supports properties for restricting certain user interactions like entering editing mode, resizing and deleting.
<b>xamDiagram</b>	Enter Key Behavior	The xamDiagram control now supports configuring of the behavior when the Enter key is pressed in editing mode.
<b>xamDiagram</b>	Hiding Toolbox Header	The control now supports an easy way to hide the toolbox's header using the HeaderVisibility property.
<b>xamDiagram</b>	Line Jumps	The control now supports rendering of "line jumps" in case when two connections are intersecting.
<b>xamDiagram</b>	New Behavior When Dropping or Copy-Pasting Diagram's Items.	There is a change in some properties' behavior when an item is dropped from the toolbox or copy-pasted.

<b>xamDiagram</b>	IDataErrorInfo Support	The control now supports visualizing of error indicators when the data items are implementing the IDataErrorInfo interface.
<b>xamEditors</b>	Spin Wrap Behavior	The xamMaskedEditor and all other editors, which extend from it, are now exposing a new property - SpinWrapBehavior of type SpinWrapBehavior that determines the value spinning behavior of the editor.
<b>xamEditors</b>	Japanese Imperial Date Support	The xamDateTimeEditor control now supports Japanese Imperial date format.
<b>xamNumericSlider and xamNumericRangeSlider</b>	A new property IsNaNValueSupported	The purpose of this new property is to enable the support for NaN values and to allow further interactions with the slider.
<b>xamPropertyGrid</b>	Brush Resources Panel	The xamPropertyGrid control now supports a new configurable Brush Resources panel in the brush editor.
<b>xamPropertyGrid</b>	Prevent Editing of Bound Dependency Properties	The xamPropertyGrid control now supports a configurable option to hide the value of bound dependency properties.
<b>xamPropertyGrid</b>	Expansion of Custom Editors	The xamPropertyGrid control now exposes a new AllowExpansionWhenUsingCustomEditor property on the PropertyGridPropertyItem class, which allows you to configure the control to expand properties with custom editors defined via PropertyGridEditorDefinition.

## What's Changed

Work Item ID	Components	Product Impact	Resolved date	Description
--------------	------------	----------------	---------------	-------------

236280	Category Chart	Bug Fix	5/1/2017	Setting a transition of type SweepFromCategoryAxisMinimum, TransitionEasingMode EaseInOut and TransitionEasingFunction ElasticEase throws System.ArgumentException.
186130	Combo Editor	Bug Fix	4/27/2017	Incorrect behavior occurs when resizing the popup to the top right corner of the screen and the WPF window is in maximized state.
225864	Combo Editor	Bug Fix	3/30/2017	Resource Washer does not wash XamComboEditor thumb when the Royal Dark theme is applied.
234422	Combo Editor	Bug Fix	3/27/2017	Changing ItemsSource and SelectedItems properties causes ArgumentNullException.
234494	Combo Editors	Bug Fix	4/4/2017	FocusVisualElement is created in the ControlTemplate after the checkbox and the content presenter.
169673	Context Menu	Bug Fix	4/6/2017	XamContextMenu has an ugly black line along its right vertical border as well as black bots in its upper & lower left corners.
235740	Context Menu	Bug Fix	4/18/2017	Nested drop-down controls in the menu force the menu to close when they are opened.
224517	Data Chart	Bug Fix	4/5/2017	The displayed crosshair color cannot be changed at runtime.
233382	Data Chart	Bug Fix	5/9/2017	Legend is not displayed until an additional item is added.
				Notes: A scenario where setting bubble series properties in a particular order could result in a blank item legend has been resolved.
235560	Data Chart	Bug Fix	4/12/2017	Setting the axis title to null does not remove the text.
236155	Data Grid	Bug Fix	5/3/2017	When the grid is empty at the start, programmatically adding a calculated field and adding the first record results in the calculations not evaluating.
236481	Data Grid	Bug Fix	5/3/2017	Memory leak exists when clearing and re-populating records when DataPresenterCalculationAdapter is present.
234622	Data Grid	Bug Fix	3/31/2017	Scrolling after loading the filter customizations with calculated columns present shows jumbled text in the grid cells.

234619	Data Grid	Bug Fix	3/31/2017	Filters do not evaluate correctly when loading them as a customization when calculated fields are present and ReevaluateFiltersOnDataChange is set to "False".
235239	Data Grid	Bug Fix	4/6/2017	Selected row blinks for a short time after bound data collection calls Clear method and new data is provided.
234517	Data Grid	Bug Fix	4/11/2017	Fixed field does not move to the Far edge aligning with the other fixed field when there is a hidden field.
230238	Data Grid	Bug Fix	4/24/2017	IndexOutOfRangeException occurs with data continuously updating while GroupByEvaluationMode is set to UseCollectionView.
235909	Data Grid	Bug Fix	4/24/2017	Record containers are still discarded while scrolling a hierarchical grid when RecordContainerRetentionMode is set to "RetainDeactivatedContainersPermanently".
234475	Data Grid	Bug Fix	4/25/2017	IndexOutOfRangeException exceptions occur when adding and clearing Fields to/from the FieldLayout.Fields collection.
236859	Data Presenter	Bug Fix	5/10/2017	FieldLayouts become available later than they used to.
224189	Data Presenter	Bug Fix	4/3/2017	Many elements are not washed in xamDataGrid with the Royal Dark theme.
234815	Data Presenter	Bug Fix	4/3/2017	The margins between the FieldGroups are too big in the Print Basic theme.
235155	Data Presenter	Bug Fix	4/5/2017	BindingExpression path errors appear in the grid when opening the XamDateTimeEditor drop-down with the Royal Dark theme applied.
234768	Data Presenter	Bug Fix	4/10/2017	CalculationSettings are not merged correctly when loading customizations.
				<p>Notes:</p> <p>A new parameter of type CustomizationType (flagged enum) is added in the LoadCustomizations methods of the DataPresenter for excluding particular customizations. The default value is None.</p>
224503	Data Presenter	Bug Fix	4/19/2017	The FieldGroupLabelPresenters are not clearly visible with the Royal theme.
224508	Data Presenter	Bug Fix	4/19/2017	The Menu Button of HeaderPrefixArea is not clearly visible when the Orientation of GridViewSettings is Horizontal with the Onyx theme.
234807	Diagram	Bug Fix	3/28/2017	Hovering and clicking quickly on the toolbox items produces an exception.

235842	Dialog Window	Bug Fix	4/19/2017	When gaining again the focus, the modal xamDialogWindow is overlaid by a nontransparent rectangle when the Office2013 theme is applied.
206677	Dialog Window	Bug Fix	4/24/2017	XamDialogWindow could not be moved after loading.
112010	Excel	New Functionality	11/19/2012	Excel Engine is not DPI aware, causing Workbook.PixelsToCharacterWidth256ths() to yield different values depending on the DPI setting.  Notes: In the Excel library is added a property to Workbook called ScreenDpi so the developer can set the Dpi the Workbook uses for size calculations. If it is not set, Silverlight will use 96 and all other platforms will attempt to determine the Dpi from the system (if permissions allow).
230871	Excel	Bug Fix	3/31/2017	Exception is thrown when Workbook.SetCurrentFormat is used to change the format of a Workbook.
235672	Excel	Bug Fix	4/17/2017	Saved Excel file is corrupted if some worksheet rows are inserted and removed.
235673	Excel	Bug Fix	4/17/2017	InvalidOperationException (Merged cell regions can't overlap) is thrown at MergedCellsRegions.Add() after inserting and removing some worksheet rows.
235738	Excel	Bug Fix	4/17/2017	When a sheet name can be replaced to R1C1 format, NameReference cannot be set.
235739	Excel	Bug Fix	4/17/2017	When a sheet name can be replaced to R1C1 format, PrintArea cannot be set.
234819	Gantt	Bug Fix	3/31/2017	Some resource strings as the task duration - "day" and "days" are not translated.
233149	Geographic Map	Bug Fix	4/29/2017	When the DefaultInteraction property is set to "None," e.Item in the SeriesMouseLeftButtonUp event returns null.  Notes: Mouse capture was interfering with item detection on mouse up. This has been resolved.
226397	Geographic Map	Bug Fix	4/7/2017	Clearing the sub domains on Bing Imagery does not null the sub domains/images.

235562	Geographic Map	Bug Fix	5/8/2017	Resizing the map after setting the WindowRect programmatically zooms into the top-left of the available area.  Notes: This bug was caused by the order of operations issue where zooming was using the previous window rect value instead of the new one. This has been resolved by using the most up-to-date window rect.
229469	Geographic Map	Improvement	5/8/2017	Tile caching clearing is required in order to suppress the memory growth when new tiles are loaded.  Notes: The GeographicMapImagery CacheSize property was added. This property can be used to limit the number of images in the tile cache of the multi-scale image.
236394	Geographic Map	Bug Fix	4/28/2017	Database and shape file numeric parsing is not invariant in the XamGeographicMap, which causes issues in cultures with comma decimal point separators.
166944	Grid	Bug Fix	4/28/2017	The group column disappears when moved.
186270	Grid	Bug Fix	4/24/2017	The columns that are inside a GroupColumn cannot be moved.
232345	Grid	Bug Fix	3/23/2017	Exponentially slowing performance when generating many columns.  Notes: We have added a new public method to the ColumnBaseCollection named AddRange. It improves the performance of adding many columns one after another. The same performance improvement the new method is using is also applied when auto generating columns.
236891	Grid	Bug Fix	5/10/2017	The CellControlAttached event is not fired for the first cell of a row when having Group columns.
236606	Grid	Bug Fix	5/10/2017	Low performance in XamGrid when scrolling horizontally through selected rows.
234970	Grid	Bug Fix	4/3/2017	Filter condition is removed from the UI after grouping is removed and restored.
235569	Grid	Bug Fix	4/11/2017	AugumentOutOfRangeException is thrown when a group row is expanded.

235570	Grid	Bug Fix	4/11/2017	InvalidCastException is thrown when a column is grouped.
235630	Grid	Bug Fix	4/13/2017	FilterMenuSelectionListGeneration setting set to ExcelStyle does not work if FilteringScope is set to "ColumnLayout".
235624	Grid	Bug Fix	4/19/2017	Japanese characters cannot be entered into the filter editor in the FilterMenu popup if a grid is inside a ContentPane.
235627	Grid	Bug Fix	4/19/2017	Japanese characters cannot be entered into the editor in the custom filter dialog if a grid is inside a ContentPane.
235286	Grid	Bug Fix	4/21/2017	The vertical alignment of the header and the cell breaks after a column under a group column is resized.
235970	Grid	Improvement	4/21/2017	The Sort indicator appears even when the column IsSortable property is set to false.  Notes: When a xamGrid column is not sortable, the sorting indicator won't be displayed. This is also valid in case the xamGrid is grouped by not sortable column – the indicator won't be displayed.
186377	Grid	Bug Fix	4/25/2017	Part of the inner layout grid is not rendered when a cell from the main layout is selected.
186380	Grid	Bug Fix	4/25/2017	XamGrid cell navigation with keyboard breaks after navigating to the inner layout grid cells, which are outside of view initially.
220403	Grid	Bug Fix	4/28/2017	The SelectAll checkbox in the FilterSelectionControl does not update correctly.
236162	Grid	Bug Fix	4/27/2017	StackOverflowException is thrown when items are filtered in the filter menu popup.
228492	Installers	Bug Fix	11/8/2016	NuGet installer cannot be licensed once installed as a trial from Uninstall or Change program.
235823	Month Calendar	Bug Fix	4/20/2017	Today button contains the date with the Office2013 theme.
235972	OutlookBar	Bug Fix	4/21/2017	The mouse cursor becomes hand on the selected group content area when Office 2013 or some other theme is applied.  Notes: Removed the setter that was causing this issue.



216724	Pivot Grid	Bug Fix	4/3/2017	The Slicer items are not populated when using XmlDataSource.
234901	Pivot Grid	Bug Fix	3/31/2017	ArgumentOutOfRangeException is thrown when the layout file is updated several times and loaded.  Notes: In order to prevent a crash caused by saving a modified grid, when the DeferredLayout feature is enabled, from now on the SaveCustomizations method will cause a refresh of the grid when this feature is turned on. This has the same effect as calling the RefreshGrid method of the data source or pressing the "Update Layout" button on the XamPivotDataSelector.
229990	Radial Gauge	Bug Fix	4/14/2017	XamRadialGauge PixelScalingRatio should not be exposed.
224710	Ribbon	Bug Fix	4/20/2017	The dropdown arrow in the Segmented MenuTool in the XamRibbon is not aligned in the middle when the tool is hovered over in certain themes.
235231	Slider	Bug Fix	4/6/2017	When placing a binding to the TickMarks of the slider, the value of the binding is not respected.
236873	Theme Manager	Bug Fix	5/10/2017	When applying the Metro Dark theme with ThemeManager to the WPF GroupBox with BorderThickness only for the top part, the header is struck through.  Notes: The GroupBox style is updated.
223308	Themes	Bug Fix	4/11/2017	ValueBar is indistinguishable from the background for the control's view in the Royal Dark theme.
223309	Themes	Bug Fix	4/11/2017	TargetValue Needle is indistinguishable from the background for the control's view in the Royal Dark theme.
223312	Themes	Bug Fix	4/11/2017	TargetValue Needle and ValueBar appear hidden, as they are same color as control background in the Metro theme.
223319	Themes	Bug Fix	4/11/2017	TargetValue Needle and ValueBar appear hidden, as they are same color as control background in the Office 2010 theme.

223321	Themes	Bug Fix	4/11/2017	TargetValue Needle and ValueBar appear hidden, as they are same color as control background in the IG theme.
228079	Timeline	Bug Fix	3/24/2017	NumericTimeEntry does not inherit the data context from its parent timeline.
231743	Timeline	Bug Fix	4/11/2017	Data is shown in TimeLine but outside the Zoombar's range.  Notes: An issue was found where the thumb in the timeline's zoom bar was not correctly aligned with the preview content. This has been corrected.
236285	Timeline	Bug Fix	5/9/2017	NullReferenceException is thrown when bound data is removed while the control is within a floating pane.  Notes: An issue was found where a null reference exception would be thrown after a XamTimeline is unloaded. This has been corrected.
236111	Timeline	Bug Fix	5/9/2017	NullReferenceException is thrown when the Series property is set to null.  Notes: An issue was found where a null reference exception would occur in the XamTimeline when setting the Series property to null. This has been corrected.
211937	X-Platform Data Grid	Bug Fix	4/3/2017	[WPF - xGrid] Binding ItemsSource in XAML throws NullReferenceException.