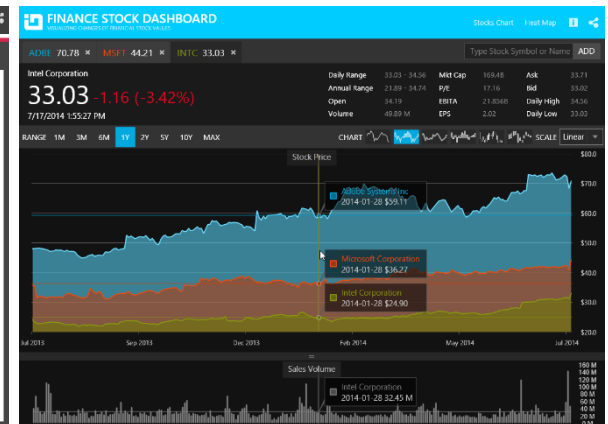
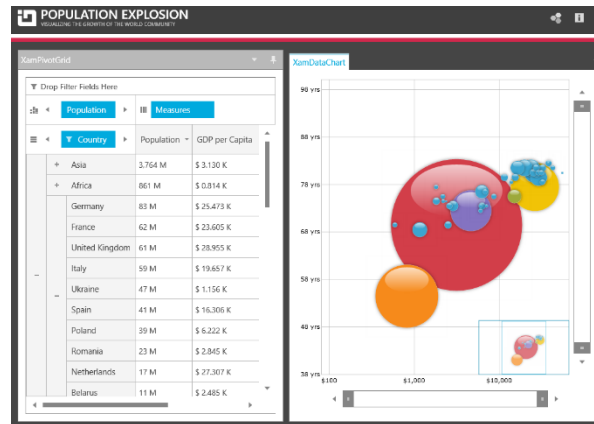
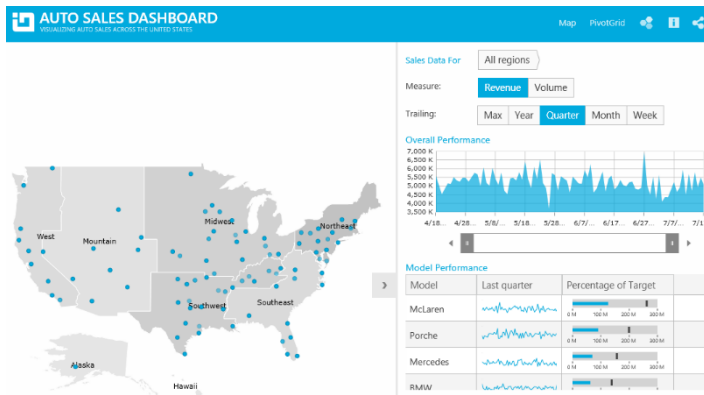




INFRAGISTICS WPF 15.2 – Service Release Notes – March 2016

Raise the Bar on Both BI and Desktop UI with Infragistics WPF Controls

Infragistics WPF controls provide breadth and depth in enabling developers to bring modern, trend-setting applications to market while shortening development time. If you need gesture/touch support, dynamic themes, and lightning fast performance in one WPF package, look no further.



Installation

Downloading	Download Infragistics Controls for WPF here.
--------------------	--

What's Changed

Components	Product Impact	Description
Busy Indicator	Improvement	XamBusyIndicator Cleanup
Carousel Panel	Bug Fix	<p>When placed in a tab control inside a StackPanel, items do not render correctly.</p> <p>Notes: Resolved an issue in the XamTabControl which could occur if the control was placed inside of a StackPanel. In this scenario, the content for the selected tab would not display correctly when the control was initially displayed. Switching to another tab and then back to the original tab, or resizing the control would clear up the rendering issue.</p>
Combo Editor		Drop down does not appear under the control
Combo Editor	Bug Fix	<p>NullReferenceException thrown when SelectedItems is bound, IsEditable = true, and an ItemTemplate is applied.</p> <p>Notes: Resolved an issue in the XamWebComboEditor when the SelectedItems property was bound to a null value. In this case a null reference exception was raised.</p>
Combo Editor		Tab stop is lost when placed inside of a tab in a XamDockManager and tab is loaded a second time.

Combo Editors	Bug Fix	Design-time error appears when changing the SelectedValuePath property in VS Properties pane.
Data Chart	Bug Fix	Series do not render correctly when using multiple Olap axes. Notes: When there were two olap axis in the chart the second one were not display due to bug in series name generation
Data Chart	Bug Fix	DataChart created in separate UI thread causes thread access exception
Data Chart	Bug Fix	Setting the MinorInterval on the CategoryDateTimeXAxis results in an OutOfMemory exception. Notes: The time between the chart is rendered but data is still not applied the range interval could be between DateTime.Min and DateTime.Max. This reflects in unnecessary minor line drawing.
Data Chart	Bug Fix	No way to view all markers on LineSeries containing many datapoints Notes: Added a property to LineSeries and other AnchoredCategorySeries called MarkerCollisionAvoidance. The default is "Omit" and retains the behavior of previous versions. The second option available now is "None" which will cause all markers to be displayed.
Data Chart	Bug Fix	Misplaced ToolTips Notes: Correct tooltip position when the chart is placed in a horizontally scrolled container.

Data Chart	Bug Fix	<p>When the ItemsSource gets ordered, sometimes the markers shown in a ScatterSeries will not correctly reflect the ItemsSource of that series.</p> <p>Notes: An issue was found where NotifyCollectionChangedAction.Move actions were ignored by FastItemsSource. This has been corrected.</p>
Data Grid	Bug Fix	Layout flickers when the data source is changed
Data Grid	Bug Fix	NullReferenceException in designer when setting Window designer data context in XAML.
Data Grid		NullReferenceException in RecordManager.RemoveRecordHelper when removing records.
Data Grid	Bug Fix	Excel-copied cells are not pasted into the grid correctly if an Excel entry has quotation marks around it.
Data Grid	Bug Fix	Replacing derived objects with an object of the same type causes the cells to display blank.
Data Grid	Bug Fix	NullReferenceException when adding fields with column chooser
Data Grid	Bug Fix	Calculation performance decreases when summary included in formula
Data Grid	Bug Fix	RecordPresenter.DataPresenter property is null during OnIsFocusWithinChanged
Data Grid	Bug Fix	RecordFilterChanging and RecordFilterChanged events are fired when the RecordFilterDropdown has been opened after a filter has been added previously.
Data Grid	Bug Fix	Only the first character is allowed to be input in the xamDataGrid after changing from Hiragana to direct input
Data Grid	Bug Fix	Toggling IME mode causes a cell to enter in edit mode
Data Grid	Bug Fix	ActiveDataItem property's binding won't work when DataContext for the Window is set in XAML.
Data Presenter	Bug Fix	<p>[Office2013]The row selector and the column header is not washable</p> <p>Notes: The ComponentResourceKeys brushes were updated so they could get washed.</p>
Data Presenter	Bug Fix	Removing item from datasource leads to NRE

Data Presenter	Bug Fix	NullReferenceException in CellValuePresenter's IsCellEnabled property when "disposing" the grid.
Data Presenter	Bug Fix	RefreshCellValues method of DataRecord does not work when have applied filter for some Field
Data Presenter	Bug Fix	When incorrect Field.Name causes a new FieldLayout to be generated there is no warning output to the debugger
Data Presenter	Bug Fix	Incorrect /// comment for RecordListControlStyle property
Data Presenter	Bug Fix	DataPresenterBase's GetRecordListControlStyle method always returns the Style from the DP's Resources.
Data Tree	Bug Fix	Memory and CPU performance issues when loading and scrolling with screen reading app open
Data Tree	Bug Fix	SelectedNodesCollectionChanged event does not fire when the selected node is deleted
Data Tree	Bug Fix	Items are not loaded when its Visibility is set to Visible at runtime
Diagram	Bug Fix	DiagramNode is not removed after clearing ItemsSource
Diagram	Bug Fix	Null reference exception is thrown when ItemsSource is set in code behind
Dock Manager	Bug Fix	ContentPane doesn't take focus when no other control will
Dock Manager	Bug Fix	LoadLayout exception when TabGroupPane has x:Name set
Dock Manager	Bug Fix	NRE is thrown in retemplated PanTabItem when has no content in header and is losing focus
Dock Manager	Bug Fix	NullReferenceException when dropping a pane that has been removed when FloatingWindowDragMode is set to "Deferred"
Dock Manager	Bug Fix	InvalidOperationException when FloatingWindowDragMode is set to Deferred and parent dock manager is destroyed when dragging a pane.
Dock Manager	Improvement	<p>No way to control whether the docking indicators are hidden when Ctrl key is pressed.</p> <p>Notes: The xamDockManager, like Visual Studio, does not allow docking while the Control key is pressed during a drag operation. A new property named 'PreventDockingWhileControlKeysPressed' has been added to the PaneDragStartingEventArgs that can be used to disable this functionality.</p>

Dock Manager	Bug Fix	NullReferenceException is thrown when a pane's dock state is changed to floating.
Excel	Bug Fix	Exception when pasting specific data from a XLSX file to xamSpreadsheet
Excel	Bug Fix	Loading a workbook and saving it to a different file extension results in the workbook opening in Protected View.
Excel	Bug Fix	System.UriFormatException occurs when loading an Excel worksheet with an invalid link contained in it.
Excel	Bug Fix	Worksheet.Rows.Insert() method is slow.
Excel	Bug Fix	Cell borders are not initialized properly for inserted rows/columns/cells.
Excel	Bug Fix	Loading a Workbook with lots of unshared table formulas takes a long time to load.
Excel		UriFormatException on Workbook.Load(stream): Invalid URI: The hostname could not be parsed
Excel Style Filtering	Bug Fix	Text filter menu items should be used instead of Number filter items when using a combobox field with a value path and display member path.
Geographic Map	Bug Fix	GeographicSymbolSeries MarkerTemplate is rendered in a different place when its ItemsSource is cleared and the same points are added. Notes: An issue is found where markers in a marker series would not be centered properly when added at runtime, when the MarkerTemplate has height or width settings based on bindings. This has been fixed.
Grid	Bug Fix	Headers and cells are misaligned on maximized window.
Grid	Bug Fix	Exception is thrown when column Visibility is changed in a grid with a fixed column after horizontal scrollbar is moved
Grid	Bug Fix	Columns of type decimal? have different FilterMenu options than columns of type decimal.
Grid	Bug Fix	The time needed to initially load data when having a great number of columns has increased
Grid	Bug Fix	Active cell does not move by arrow keys if an editing cell is forced to exit edit mode by moving a scrollbar.
Grid	Bug Fix	Null Reference Exception when trying to open the FilterMenu after a column was ungrouped and FilteringScope is set to ColumnLayout

Grid	Bug Fix	Grouping is not possible via dragging a column over the expansion indicator when the group-by area is collapsed.
Grid	Bug Fix	Horizontal scroll is strange when group columns are used.
Grid	Bug Fix	Scroll thumb is placed at the bottom end of the vertical scrollbar even when there are more invisible rows below.
Grid	Bug Fix	Horizontal scrolling is choppy on the first scroll(until all columns are rendered) when there are GroupColumns
Grid		Header columns and record columns get out of alignment in scrolling and resizing when group headers are used
Grid	Bug Fix	StackOverflow exception is thrown when using CollectionView and ObservableCollection of objects
Grid		Columns get out of alignment when vertical scroll bar is displayed, a lot of columns are used and datasource is repeatedly cleared and rebound
Grid		ColumnMoving does not work in some cases
Grid	Bug Fix	Horizontal scrolling is choppy in the case where there are few large columns at the beginning followed by a number of short ones
Grid		[xamGrid]When double click to resize a group column, the header text disappears
Grid	Bug Fix	themes issues
Grid	Bug Fix	ActiveCell is not automatically scrolled into view when horizontal scrolling is needed
Multi Column Combo	Bug Fix	Control does not take focus when tabs are changed and the 'Tab' key is pressed
Multi Column Combo	Bug Fix	InvalidOperationException when control is in a XamDataGrid and DisplayMemberPath and MinimumDropDownWidth properties are set.
Multi Column Combo	Bug Fix	When applying IgTheme/Office2010Blue theme for MulitColumnCombo via the ThemeManager
Multi Column Combo	Bug Fix	Horizontal scrollbar does not appear when the last column is in view but not fully visible

Property Grid	Bug Fix	<p>ExceptionValidationRule is not correctly processed when using EditorValue property</p> <p>Notes: Resolved an issue in XamPropertyGrid when using a custom property editor which resulted in ValidationRules not always being honored.</p>
Property Grid	Bug Fix	<p>TypeConverter on property no longer works</p> <p>Notes: Resolved an issue in the XamPropertyGrid where a TypeConverter specified for a list-type property was not being called to update the property's value description when the property was expanded to reveal the items contained in the list.</p>
Property Grid	Bug Fix	<p>Exception is thrown when Office2013 theme is set</p>
Property Grid	Bug Fix	<p>Expanding all property items stops short</p> <p>Notes: Resolved an issue in the XamPropertyGrid which occurred when attempting to programmatically expand a property item and multiple generations of children. In this scenario the programmatic expansion would stop after a couple of generations, even though the end user was still able to manually expand the children via the UI.</p>
Ribbon	Bug Fix	<p>Performance issue when using MenuTool with large number of items</p> <p>Notes: MenuTool like the MenuItem class in the WPF framework does not virtualize the items within the popup by default. To do that one must set the ItemsPanel to an ItemsPanelTemplate that contains a VirtualizingStackPanel and have set a MaxHeight (or Height) on that VirtualizingStackPanel. In addition one must set the attached ScrollViewer.CanContentScroll to true on the MenuTool (again as one would need to do with a MenuItem). The issue that was fixed for this bug is to ensure that the ScrollViewer.CanContentScroll set on a MenuTool is propagated to the MenuItem that represents the tool.</p>

Ribbon	Bug Fix	TabItem is not selected when clicking on it if it was lastly selected by using a key tip
Rich Text Editor	Bug Fix	Some lines are loaded from RTF file with extra space
Rich Text Editor	Bug Fix	Scrollbar thumb is jumping when scrolling the editor's content using the mouse wheel. Notes: Resolved an issue in the XamRichTextEditor which sometimes caused 'jumpy scrolling' when scrolling with the mousewheel.
Rich Text Editor	Bug Fix	TableCellBorderSettings won't apply to XamRichTextEditor's TableCellNodes until a column's width is manually resized.
Rich Text Editor	Bug Fix	Setting the Rotation of an ImageNode instance in XamRichTextEditor won't keep changes when saving and loading the document as an html file using the HtmlSerializationProvider
Rich Text Editor	Bug Fix	List indentation is not saved nor loaded via HTMLSerializationProvider
Rich Text Editor	Bug Fix	The editor's height is set to its specified MaxHeight when placed in a StackPanel. Notes: Resolved an issue in the XamRichTextEditor when the MaxHeight property was set which caused the control's height to be set to MaxHeight even when the control's contents did not required an increased height.
Rich Text Editor	Bug Fix	An error occurs when an exported docx file is opened with MS Word 2007
Rich Text Editor	Bug Fix	One of the paragraph's foreground color is wrong when importing from rtf.
Rich Text Editor	Bug Fix	Exporting to rtf format is not rendering a table correctly when loading in MS Word when style='text-align: justify;' is set
Rich Text Editor	Bug Fix	Exporting to html format is adding additional line spacing when opened in MS Word
Rich Text Editor	Bug Fix	Exporting html to rtf format is converting № symbol to superscripted 1 when opened in MS Word
Schedule	Bug Fix	Resetting the ActivityItemSource is corrupting the recurrence activities after dragging
Schedule	Bug Fix	Changing the recurrence of an activity and dragging it after that makes it disappear

Schedule	Bug Fix	<p>Unhandled ArgumentOutOfRangeException exception</p> <p>Notes: Resolved an issue in the xamScehdule ActivityRecurrenceDialog which raised an ArgumentOutOfRangeException exception if the year of the recurrence range start date was set to 9999 and the dialog's OK button was clicked.</p>
Schedule	Bug Fix	<p>InvalidOperationException when clearing date from Recurrence dialog</p> <p>Notes: Resolved an issue in the XamSchedule 'Activity Recurrence' dialog that resulted in a NullReferenceException if the end user cleared out the recurrence range start date DatePicker and clicked OK to exit the dialog without selecting a new start date.</p>
Schedule	Bug Fix	<p>Recurrence description does not update when switching between every day and every work day</p> <p>Notes: Fixed an issue in the xamSchedule ActivityRecurrenceDialog which could result in a stale recurrence description being displayed in the dialog when switching between daily recurrence patterns.</p>
Schedule	Bug Fix	<p>Occurrence is not updated correctly if it was broken before.</p>
SpreadSheet	Bug Fix	<p>Autofit column width does not work correctly</p>
Syntax Editor	Bug Fix	<p>The SyntaxEditor cannot gain the focus when is inside a ScrollViewer</p> <p>Notes: Resolved an issue in XamSyntaxEditor which prevented the control from accepting focus on a left mouse button down when it was contained in a ScrollViewer.</p>
Tab Control	Bug Fix	<p>Scrolling to top right path of the tab control and then select tab</p>
Tab Control	Bug Fix	<p>Tabs do not get resized correctly when there is a tab with larger Height in several themes</p>

Themes	Bug Fix	ComboBox does not take up all space allotted to it in Office2013 theme.
Tile Manager	Bug Fix	Application freezes when trying to maximize a XamTileManager's tile
Tile Manager	Bug Fix	When tile content is a WindowsFormsHost and the tile is scrolled out of view, the WindowsFormsHost still shows. Notes: Note: this fix causes a behavioral change in that when a tile that contains a WindowsFormsHost is being scrolled either completely out of view it will be rendered completely out of view. This is because it can/will obscure other controls on the forms. So instead of animating out of view (or into view) it will disappear at the beginning of the animation when it would have been scrolled off the tile area panel or reappear at the end of the animation when it would have scrolled back into the tile area.
Timeline	Improvement	Performance decreases when changing property in bound data Notes: An optimization was made to Timeline wherein batch updates to items in the datasource will queue a single refresh of the series, instead of invoking many refreshes.
Timeline	Bug Fix	Unable to set zoombar scale to desired size
Tree Grid	Bug Fix	Grid does not display the updated nodes.
Tree Grid	Bug Fix	TreeCellValuePresenter overrides IsExpanded binding in style
Tree Grid	Bug Fix	Connector lines disappear when reloading the view with the dock manager containing the tree grid and some theme is set via the Theme property.
Tree Grid	Bug Fix	Connector lines disappear when reloading the view when the tree grid is placed in an unpinned pane and some theme is set via the Theme property.
WPF	Bug Fix	Gauge.WPF.Design.csproj will not open in VS2010
XAML	Bug Fix	ListBoxItems that contain UI elements disappear after selection

