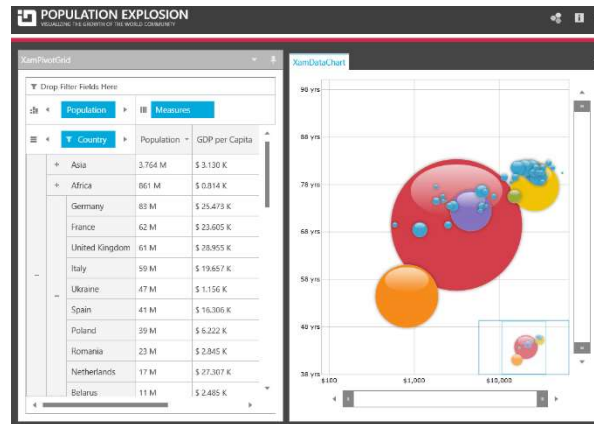
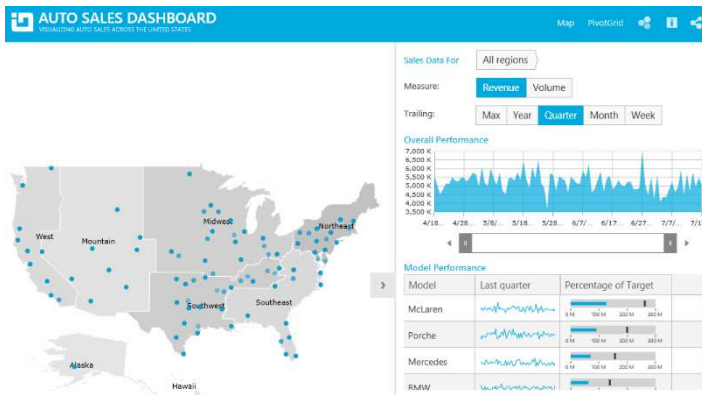




# INFRAGISTICS WPF 20.2 – Service Release Notes – March 2021

## Raise the Bar on Both BI and Desktop UI with Infragistics WPF Controls

Infragistics WPF controls provide breadth and depth in enabling developers to bring modern, trend-setting applications to market while shortening development time. If you need gesture/touch support, dynamic themes, and lightning fast performance in one WPF package, look no further.



## Installation

<b>Downloading</b>	<a href="#">Download Infragistics Controls for WPF here.</a>
--------------------	--

## What's Changed

ID	Component	Product Impact	Description
270903	Calendar	Bug Fix	When using the change week buttons in the XamOutlookCalendarView when the SelectedDates collection of the date navigator are set, appointment presenters are drawn multiple times
258024	Combo	Bug Fix	Multiple selection when filtering is enabled selecting items programatically does not make them appear selected/checked in dropdown
272128	ComboEditors	Bug Fix	NullReferenceException happening in ComboEditorBase.DataManager_CollectionChanged
270642	DataChart	Bug Fix	System.ArgumentOutOfRangeException is thrown when the mouse is moved over the chart area if the bound data collection is empty.  A scenario where mousing over an empty plot area on the timexaxis could through an out of range error has been resolved.
249034	DataGrid	Bug Fix	XamDataGrid Empty child collection with AllowAddNew doesn't show on expansion icon
255638	DataGrid	Bug Fix	When bound to an empty data source, Fields that have a width of "InitialAuto" are not resizable.
256065	DataGrid	Bug Fix	Auto width CheckBoxField expands each time clicking between 2 or more checkboxes
271871	DataGrid	Bug Fix	XamDataGrid with merged cells throws an exception when scrolling to end of merged regions

272019	DataGrid	Bug Fix	XamDataGrid's fixed fields' cells get overlapped by another field's merged cells on resize
272390	DataGrid	Bug Fix	NullReferenceException is thrown if a Japanese character is entered into a numeric cell and exits edit mode before committing IME input.
271564	DataGrid	Bug Fix	NullReferenceException in Infragistics.Windows.DataPresenter.RecordPresenter.CoerceExpansionIndicatorVisibility
			<p>The crux of this bug is that there is some code for an old bug fix for TFS25122 that is intended to deal with fields whose Visibility is Collapsed. The original bug has a grid with 5 columns and every even-number columns is initially Visibility.Collapsed and when the user would show those fields using the FieldChooser, they would show up in the wrong place.</p> <p>The code for this basically entails looping through each field and tracking the last field that WAS actually visible and then when it hits a field that is not in the layout (not visible), it would position that column after the last visible field processed.</p>
248733	DataGrid	Bug Fix	<p>This all makes sense until you add Groups into the mix. Since the group is an item in the layout and is visible, and the fields inside the group are NOT in the layout when the group is collapsed, this code was messing up the positions of the fields inside the collapsed group. It essentially set the position of the field as though it were adjacent to the group, because the code did not account for groups and assumed that all fields are sibling to each other.</p> <p>The fix for this is very simple - I added a check to skip the code that updates the position of a field if that field is not in the Layout and is inside a collapsed group.</p> <p>It seems to make sense to simply not mess with the position of fields inside a collapsed group. But an alternative solution (in case the first one doesn't work or causes some other problem) would be to cache the last location of each visible fieldItem within each container so that siblings are related only to other siblings within the same group (or at the root level).</p>

271221	DataGrid	Bug Fix	Printing a grid that has had its grouped Field removed/hidden results in an exception
271436	DataGrid	Bug Fix	Exceptions while filtering a grid with merged cells
270195	DialogWindow	Bug Fix	The dialog window disappears when its IsModal property value is changed from True to False while the dialog window is shown.
271632	DockManager	Bug Fix	Intermittently using two monitors with two different zoom levels causes panes to not paint correctly when resized
268561	Excel	Bug Fix	Excel theme setting is lost after loading and saving the file.
271473	Excel	Bug Fix	AllowNull is not being brought over from Excel for ListDataValidationRules
271476	Excel	Bug Fix	IndexOutOfRangeException thrown if the current culture's NumberFormat.NumberGroupSeparator is empty
271314	Excel	Bug Fix	Loading and Saving excel workbook slightly modifies shapes size
271635	Installers		No DesignTools assemblies in msi installation
271759	Installers		Missing NuGet packages
271772	Installers	Bug Fix	Clr 4 Bin signed zip file does not contain the Design Tools assemblies
271777	Installers	Bug Fix	Missing NuGet packages and assemblies in 20.2 installation
271829	MaskedText	Bug Fix	For 2-byte characters, the maximum number of characters or more can be entered
271159	PropertyGrid	Bug Fix	Occurred InvalidOperationException when update the value from outside the UI thread
271097	Ribbon	Bug Fix	Quick Access Toolbar is not displayed if the app runs on a non-primary monitor.
271098	Ribbon	Bug Fix	Ribbon groups are not auto-resized when the window size is changed if the app runs on a non-primary monitor.
272049	RichTextEditor	Bug Fix	XamRichTextEditor Freezes application when binding to invalid html
271735	Schedule	Bug Fix	XamDateNavigator loses SelectedDates if the Schedule is navigated by Navigationbuttons
271990	Schedule	Bug Fix	First/last week of the year is displayed in two separate rows in the month calendar.
269161	Spreadsheet	Bug Fix	Values are invisible/hidden
271674	Spreadsheet	Bug Fix	Protecting worksheet does not prevent selecting values from dropdown
272188	TextEditor	Bug Fix	XamTextEditor: InvalidCastException occurs when HorizontalContentAlignment property is bound to a property in the view model.

271885

Themes

Bug Fix

Cell texts are not fully displayed in edit mode when using the Theme file

Removed wrongly added implicit styles and added the same property needed in the Control Template of the XamTextEditor.

Fixed the difference in height between the WPF ComboBox and the XamComboEditor in Office themes.