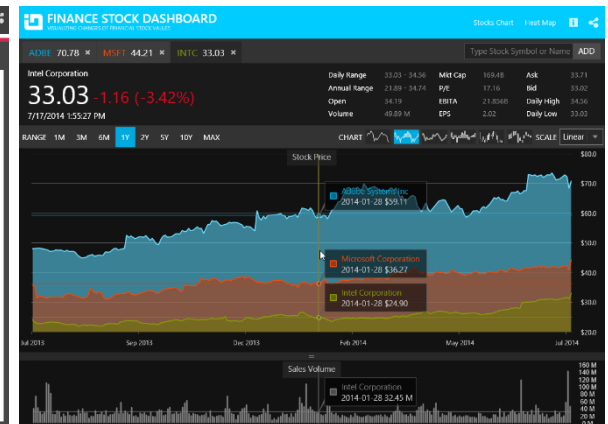
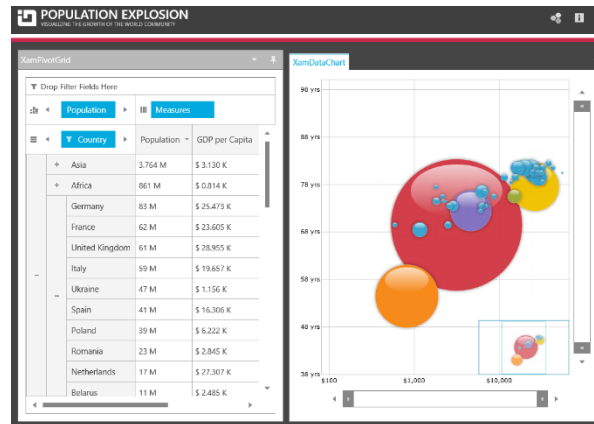
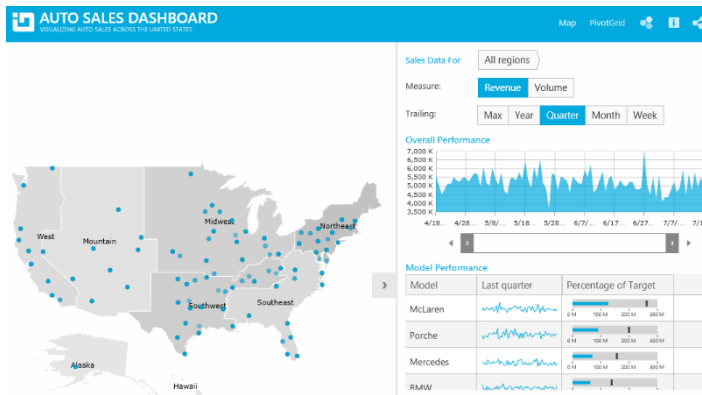




INFRAGISTICS WPF 17.2 – Volume Release Notes – 2017

Raise the Bar on Both BI and Desktop UI with Infragistics WPF Controls

Infragistics WPF controls provide breadth and depth in enabling developers to bring modern, trend-setting applications to market while shortening development time. If you need gesture/touch support, dynamic themes, and lightning fast performance in one WPF package, look no further.



Installation

Downloading	Download Infragistics Controls for WPF here.
--------------------	--

What's New

Component	Feature Name	Descriptions
All	Royal Light Theme	The Royal Light theme is a consistent and simplified new theme enriched with more visual states, featuring improved UX and light colors.
Data Presenter Family of Controls	Performance Improvements	The SimpleTextBlock, which is found in the editor templates found in cell templates, now uses GlyphRun instead of FormattedText. This leads to significant performance improvements when rendering the cell's text.

What's Changed

Work Item ID	Components	Product Impact	Resolved date	Description
243008	Barcode Reader	Bug Fix	29-09-17	Some pictures taken with a webcam cannot be decoded.
242219	Busy Indicator	Bug Fix	13-09-17	It is possible to tab into elements that are children of the XamBusyIndicator while it is busy.
241639	Category Chart	Bug Fix	28-08-17	Category Chart XAxisTitleOpacity and YAxisTitleOpacity have incorrect default values, currently 0, should be 1.

241281	Category Chart	Bug Fix	18-08-17	XamCategoryChart Background property has no effect.
242661	Color Picker	Bug Fix	25-09-17	Binding error occurs when the SelectedColor property is set to null.
238926	Color Tuner	Bug Fix	17-07-17	Color Tuner is not properly installed in the Visual Studio 2017.
230815	Combo Editor	Bug Fix	28-07-17	[Metro Theme] xamComboEditor is not respecting the min-dropdown height.
239963	Combo Editor	Bug Fix	24-07-17	XamComboEditor does not select the focused item when pressing the Tab key.
240777	Combo Editor	Bug Fix	11-08-17	When the ComboEditorItemControl elements are trigger-styled according to a DataItem property in the XamComboEditor, random elements is styled.
234718	Combo Editor	Bug Fix	08-09-17	[Office2013 Theme] Scrollbar on dropdown appears for a second time and later it opens.
242773	Combo Editor	Bug Fix	26-09-17	XamComboEditor's focus border is not visible.
239138	Combo Editors	Bug Fix	29-06-17	Binding to SelectedItems in DataTemplate does not propagate back to view model.
234202	Combo Editors	Bug Fix	17-07-17	Cross-Platform XamComboEditor issues with VSM states.
227652	Combo Editors	Bug Fix	15-09-17	Drop-down list size (width and height) is not calculated correctly when the Office2013 theme is applied.
241454	Data Chart	Bug Fix	23-08-17	Adding an axis to series before adding a chart causes NullReferenceException.
241575	Data Chart	Bug Fix	29-08-17	Different behavior with logarithmic numeric axes when targeting 64-bit versus 32-bit when plotting values that are less than 1, but greater than 0. Notes: Adjusted the logarithmic code so that it will work correctly in 64bit mode.
242889	Data Chart	Bug Fix	22-09-17	TimeXAxis can't see the axis line.

238291	Data Grid	Breaking Change (API)	30-06-17	<p>The e.DropDownItems argument of the RecordFilterDropDownPopulating only contains the built-in filter items.</p> <p>Notes: New event is added in the XamDataPresenter called RecordFilterDropDownPopulated. Raised after the filter drop-down is populated by the data presenter, giving you a chance to replace the filter drop-down with your own items or remove some of them.</p>
238413	Data Grid	Bug Fix	22-06-17	XamDataGrid's Filter Operator is not displayed when only one Operator is set.
240171	Data Grid	Bug Fix	26-07-17	The BindingPath and AlternateBinding's path affects the loading of customizations.
239761	Data Grid	Bug Fix	01-08-17	<p>Blanks operand in MultiSelectExcelStyle should include white-space only strings.</p> <p>Notes: Now the whitespaces are treated as "(Blanks)" and the filter operand will filter them in or out.</p>
241250	Data Grid	Bug Fix	22-08-17	<p>[Royal Dark Theme] Styling the DataRecordCellArea's Background property has no effect.</p> <p>Notes: Updated DataRecordCellArea Style.</p>
241479	Data Grid	Bug Fix	07-09-17	Error appears when setting the IsScrollTipField property in design time.
241724	Data Grid	Bug Fix	07-09-17	[Royal Dark Theme] The CellValuePresenter foreground is respected only on cells with certain editors.
241725	Data Grid	Bug Fix	07-09-17	[Royal Dark Theme] Foreground property for CellValuePresenter style does not do anything.

242288	Data Grid	Bug Fix	15-09-17	Grouping and sorting operations, and loading customizations with those operations with a large amount of records is slow.
242731	Data Grid	Bug Fix	22-09-17	When SortEvaluationMode and GroupByEvaluationMode are both set to "UseCollectionView" and there are multiple groups, sorting collapses the groups.
242826	Data Grid	Bug Fix	22-09-17	StackOverflowException is thrown when using Records.ExpandAll(true).
239217	Data Grid	Bug Fix	26-09-17	XamDataGrid's BeginUpdate and EndUpdate methods cause IndexOutOfRangeException.
242791	Data Grid	Bug Fix	28-09-17	NullReferenceException is thrown when loading a grid and resizing the containing pane in XamDockManager.
239738	Data Presenter	New Functionality	26-07-17	<p>Load customizations does not restore the column ordering when their order has been saved on application start.</p> <p>Notes: Added 'saveFieldPositionInfoAlways' parameter to xamDataPresenter's SaveCustomizations method. If it is set to true, this will address this issue.</p>
241326	Data Presenter	Bug Fix	24-08-17	[Royal Theme] Missing right border of a field that is dragged from the header area of the DataGrid or from the FieldChooser.
242582	Data Presenter	Improvement	19-09-17	<p>Loading customizations method fails after a field has been removed even if a FieldLayout Key has been supplied.</p> <p>Notes: Added overloads to LoadCustomizations method off DataPresenterBase that take a new boolean parameter named 'useStrictFieldMatching'. If not specified, it defaults to false. If 'false' will match a FieldLayout whose Key has been set to a unique value even if some or all the Fields that were present when the</p>

				SaveCustomizations method was called are no longer present at the time of the load.
242943	Data Presenter	Bug Fix	26-09-17	Index out of Range Exception is thrown when adding child records after using GroupBy.
237322	Data Presenter ExcelExporting	Bug Fix	22-06-17	ArgumentNullException is thrown just by creating a DataPresenterExcelExporter instance when trial dlls are used.
241328	Data Presenter Field Chooser	Bug Fix	22-08-17	[Royal Theme] Unnecessary border of the fields in FieldChooser when the theme is washed.
241411	Data Presenter Field Chooser	Bug Fix	22-08-17	[Royal Theme] Incorrect/missing icon for indeterminate state of "All fields" checkbox in FieldChooser.
240671	Data Presenter Fixed Fields	Bug Fix	08-08-17	Cells do not reposition after increasing and decreasing the FixedFieldSplitter width.
241891	Data Presenter Fixed Fields	Bug Fix	28-09-17	[Royal Theme] Field fixing does not work when it is set to 'Near' or 'Far'.
204307	Data Presenter Record Filtering	Bug Fix	10-08-17	Incorrect caret placement in ExternalFiltering when window is in Maximized state.
228269	Data Tree	Bug Fix	11-07-17	Incorrect nodes are displayed when having a sibling node layout and using the IsExpandedMemberPath property.
238470	Data Tree	Bug Fix	17-07-17	Selection\Multiple selection in XamDataTree does not work properly when the IsSelectedMemberPath is set.
241420	Data Tree	Bug Fix	30-08-17	NullReferenceException is thrown in GetDataItem method of NodesManager, NodeLayout returns null.
242642	Data Tree	Bug Fix	19-09-17	Selected items range is not properly updated when selecting/deselecting using Shift.

241276	Date Time Editor	Bug Fix	27-09-17	XamDateTimeEditor's mask doesn't display hour when date is set and Chinese or Japanese regional settings are used.
241524	Date Time Editor	Bug Fix	29-09-17	[IG Theme] The pin in the drop-drown button is not centered.
239328	Diagram	Bug Fix	07-07-17	DiagramConnection is added to the node's OutgoingConnections collection even if ItemAdding event is canceled.
234610	Dock Manager	Improvement	31-05-17	SplitCursor appears invisible on higher resolutions (eg. 3200x1800) Notes: A new property named ScaleCursorWithDpi has been added to the Utilities static class. By default, the property is true. When true and running on a system with .NET 4.6 or later, custom cursors loaded using the Utilities class' LoadCursor method (which includes the Infragistics WPF controls like xamDockManager) will be constructed using the constructor for Cursor that takes a boolean for 'scaleWithDpi'.
235835	Dock Manager	Bug Fix	27-07-17	[Metro Theme] TabPanelItem's Header text disappears when loses unfocused. Notes: Selected state has been updated.
240343	Donut Chart	Bug Fix	01-08-17	[Royal Dark Theme] Doughnut chart when used with hierarchical ring series has only one "child band" shown up. Notes: An issue was found where doughnut charts with the royal dark theme would obscure some slices. This has been corrected.
239973	Donut Chart	Bug Fix	28-07-17	Doughnut Chart does not display multiple series when using Metro Dark Theme.
238340	Donut Chart	Bug Fix	12-06-17	No outline is visible in WF version of Doughnut Chart.

				<p>The value produced by BindingExpression is not valid for target property IsSurfaceInteractionDisabled.</p> <p>Notes: Arc was binding to a version of the IsSurfaceInteractionDisabled property that was nullable while the Arc property was not nullable which produced the binding error. The nullable version has been replaced with a non nullable version so the binding now works. This was only done in 17.2 version as changing this in the earlier versions would be a breaking change for the existing applications.</p>
243170	Donut Chart	Bug Fix	04-10-17	
239758	Drag and Drop Framework	Bug Fix	20-07-17	DragSource cannot be dropped onto the drop target if the application runs in debug mode.
241592	Drag and Drop Framework	Bug Fix	01-09-17	Dragging icon becomes X when the dragged item goes over a hidden window.
242541	Drag and Drop Framework	Bug Fix	18-09-17	Legend does not get large enough to show all legend items once it is dragged and dropped.
228105	Excel	Bug Fix	24-05-17	CellFormat returned by GetResolvedCellFormat holds incorrect BorderStyle values.
239806	Excel	Bug Fix	18-07-17	FormulaParseException is thrown when loading an Excel file.
239691	Excel	Bug Fix	12-07-17	Cell borders are not copied when rows and columns are inserted in 97-2003 workbook.
241532	Excel	Bug Fix	24-08-17	Fractions are strangely reduced once the cell is committed.
239579	Excel	Bug Fix	11-07-17	Worksheet remains selected after its Visibility is changed to Hidden.
240989	Excel	Bug Fix	29-09-17	Merged cell's vertical alignment becomes Center after loading and saving the workbook.
238740	Gantt	Bug Fix	22-06-17	ProjectTask presenters can get too small to a point where they cannot be dragged.
238885	Gantt	Bug Fix	26-06-17	InvalidOperationException is thrown when setting XamGantt row cell's IsEnabled property and Office 2013 or Royal Dark theme are set.

240843	Gantt	Bug Fix	23-08-17	ProjectCalendar.ToExceptionsXml throws InvalidOperationException when more than one ProjectCalendarException is present.
240765	Gantt	Bug Fix	23-08-17	Parent task's Start and Finish properties have wrong values when its child task's PercentComplete is 100%.
242070	Gantt	Bug Fix	07-09-17	ProjectCalendar.ToExceptionsXml method does not save the rules associated with the recurrence.
221516	Gauges	Bug Fix	20-09-17	Some gauges do not render correctly when over 20 gauges are present in the application.
239701	Geographic Map	Bug Fix	19-07-17	InvalidCastException is thrown when adding points to ObservableCollection. Notes: An issue was found in updating data at runtime for ShapeSeries when the data items are of type IEnumerable<Point>. This has been corrected.
239469	Grid	Bug Fix	11-07-17	XamGrid freezes while resizing with GridSplitter and TextWrapping/Sized fields.
240355	Grid	Bug Fix	09-08-17	FilterValue text box in Custom Filter Dialog does not accept IME composition string when Keyboard.DefaultRestoreFocusMode property is set to None.
240354	Grid	Bug Fix	09-08-17	Text box in filter menu does not accept IME composition string when Keyboard.DefaultRestoreFocusMode property is set to None.
241564	Grid	Bug Fix	25-08-17	NullReferenceException is thrown in XamGrid when the close button of GroupByHeaderCellControl is pressed and ItemSource is of type CollectionView.
241520	Grid	Bug Fix	24-08-17	Horizontal scrollbar disappears when the vertical scrollbar is moved.
237864	Grid	Bug Fix	19-09-17	When XamGrid's ItemSource is bound to a DataTable's DataView, adding new columns to the table does not update the UI.

242756	Grid	Bug Fix	25-09-17	Data columns in a group column are not properly laid out after moving.
236756	Multi Column Combo	Bug Fix	31-07-17	[Royal Dark Theme] The highlighted text in the XamMultiColumnComboEditor is hardly readable when the Royal Dark theme is applied.
236974	Multi Column Combo	Bug Fix	31-07-17	[Royal Dark Theme] The vertical text alignment in Royal Dark theme is inconsistent with the other themes.
238656	Pie Chart	Bug Fix	21-06-17	Initially selected slice(s) is styled incorrectly (slice fill is wrong).
238657	Pie Chart	Bug Fix	21-06-17	Slice selected programmatically using multiple selection can't be deselected.
239140	Pie Chart	Bug Fix	21-09-17	Changing the pie chart selection from multiple to single results in multiple selected items.
239143	Pie Chart	Bug Fix	21-09-17	Changing the pie chart selection from single to multiple results in losing the initial selection when selecting value after the change.
239145	Pie Chart	Bug Fix	22-09-17	Changing others threshold to move selected slice into others slice or add unselected items to selected others slice causes selected item not to reflect all data items in others slice Legend shows the same text as pie chart slices which defeats the purpose of a legend.
227562	Pie Chart	Improvement	26-09-17	Notes: LegendLabelMemberPath is added to the WPF XamPieChart to allow users to specify different text for the legend items more easily.
239818	Pivot Grid	Bug Fix	18-07-17	StackOverflowException is thrown when the control is being saved by System.Windows.Markup.XamlWriter.Save method.
239846	Property Grid	Bug Fix	26-09-17	Scrolling quickly when the PropertyGridPropertyItemView's Visibility is bound results in NullReferenceException.
242739	Property Grid	Bug Fix	02-10-17	FilterAreaVisibility property is not respected in the MetroDark theme.

240203	Property Grid	Bug Fix	03-10-17	When placed in an unpinned pane in XamDockManager, the pane closes while property grid is still in use. Properties of type IEnumerable are not expandable.
243773	Property Grid	Bug Fix	09-10-17	Notes: Added support to XamPropertyGrid for displaying properties of type IEnumerable as expandable properties that show the IEnumerable contents within.
229806	Ribbon	Bug Fix	23-06-17	Misaligned icons appear in the Non-client area of maximized XamRibbonWindow.
238768	Ribbon	Bug Fix	22-06-17	NullReferenceException occurs at startup if more tools are placed in a RibbonTab than can fit.
210829	Ribbon	Bug Fix	18-07-17	Error appears in the VS Output when Metro or Metro Dark theme is applied.
241491	Ribbon	Bug Fix	23-08-17	RibbonTabItem is set as the ActiveItem when in active item navigation mode when tabbing between non-tool elements in a RibbonGroup
213541	Ribbon	Bug Fix	30-09-17	Style ribbon group is not displayed properly after resizing the window.
224853	Ribbon	Bug Fix	29-09-17	The KeyTips in the XamRibbon is not restyled when using different themes.
227432	Ribbon	Bug Fix	29-09-17	The rectangle part of the QAT's Dropdown area disappears when the DialogBoxLauncher of any RibbonGroup is set through XAML.
238062	Rich Text Editor	Bug Fix	13-07-17	Pressing End key, before paragraph mark, navigates to the previous paragraph. Notes: Resolved an issue with improper handling of the 'End' key when the key is pressed and there is no active selection. Previously, in this scenario, the caret would be positioned at the end of the previous

				line - with this fix it is now correctly positioned at the end of the same line.
239890	Rich Text Editor	Improvement	26-07-17	InsertTableRow takes a lot of time when you have to insert more than 200 rows.
239571	Rich Text Editor	Bug Fix	26-09-17	Table cells are overlapping when TableExtentBehavior is set to FitColumnsToContent.
230395	Schedule Schedule View	Improvement	23-08-17	Memory Leak: Continuously updating Appointments.
242498	Slider	Bug Fix	14-09-17	MinValue does not update properly, when DataContext has been changed.
240895	Spread Sheet	Bug Fix	09-08-17	Auto-sizing of a row with height -1 does not force a reevaluation of the resolved height.
241566	Spread Sheet	Bug Fix	26-08-17	Cell's horizontal alignment is not reset after unmerging via "MergeCellsAndCenter".
241567	Spread Sheet	Bug Fix	25-08-17	A cell with ShrinkToFit set to True does not wrap after using Alt + Enter.
241568	Spread Sheet	Bug Fix	25-08-17	Typing '+[integer]' followed by a fractional value is considered as an invalid formula.
240813	Spread Sheet	Bug Fix	22-08-17	InvalidOperationException is thrown when Workbook contains cells that use Japanese specific display format.
240116	Spread Sheet	Bug Fix	25-09-17	Cell format is not copied properly when a merged cell is copied and pasted.
240186	Spread Sheet	Bug Fix	22-09-17	Custom shapes are not displayed properly.
243200	Spread Sheet	Bug Fix	29-09-17	CellFormat is not copied and pasted properly.
217773	Spread Sheet	Bug Fix	03-10-17	An exception is thrown when trying to hide columns through dragging the last column.

217772	Spread Sheet	Bug Fix	02-10-17	Not able to select the previous column if only one is visible.
227882	Syntax Editor	Bug Fix	29-08-17	<p>The Japanese characters contained in an external file become garbled when it is loaded into the editor.</p> <p>Notes: Resolved an issue with xamSyntaxEditor and TextDocument that caused the files encoded as 'Japanese(Shift-JIS)' to be incorrectly formatted on initial load.</p>
241614	Syntax Editor	Bug Fix	28-08-17	[Royal Dark Theme] The text from the current line of the XamSyntaxEditor is unreadable when it is highlighted with the default brush.
241150	Syntax Editor	Bug Fix	22-09-17	Writing a comment between the lines when using the Custom XML Language from the Samples Browser results in an IndexOutOfRangeException.
232676	Themes	Improvement	27-07-17	<p>Inconsistencies between XamComboEditor and WPF ComboBox when Metro theme is applied.</p> <p>Notes: Fixed inconsistencies among all IG combo Editors and WPF ComboBox (inbox control).</p>
242764	Tile Manager	Bug Fix	22-09-17	Closing/collapsing XamTile with the close button and then setting its Visibility to Visible does not work.
242406	Timeline	Bug Fix	19-09-17	Setting the width and height on time line causes long event details to be displayed with scrollbars.
239541	Tree Grid	Bug Fix	25-07-17	FieldLayouts appear to be "reassigned" incorrectly after regenerating a DataSource and utilizing a previously used FieldLayout.
240070	Tree Grid	Bug Fix	08-09-17	When using a hierarchy with different types, setting the DataSource to null throws InvalidOperationException.

