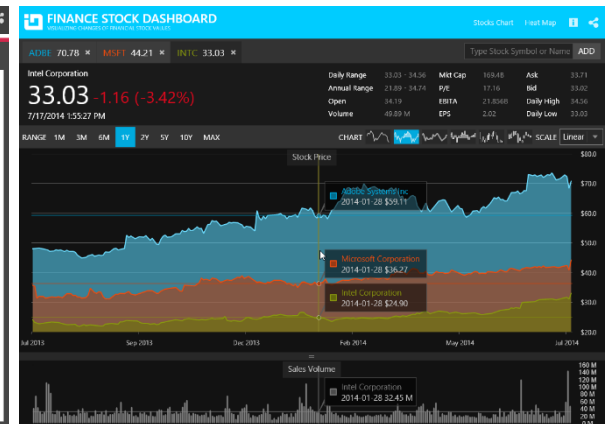
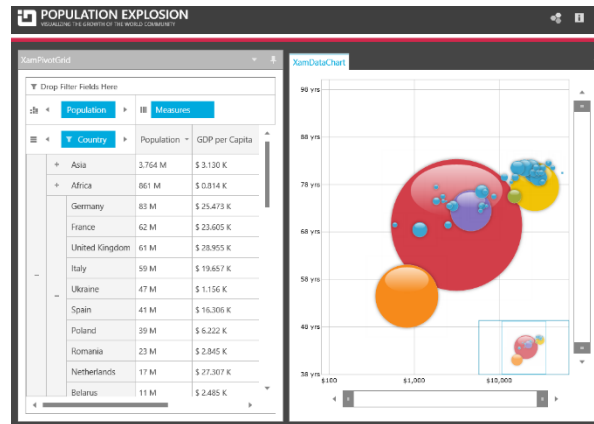
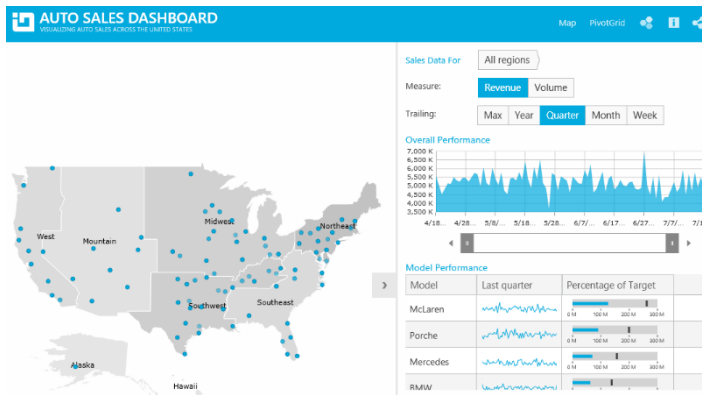




INFRAGISTICS WPF 16.2 – Volume Release Notes – 2016

Raise the Bar on Both BI and Desktop UI with Infragistics WPF Controls

Infragistics WPF controls provide breadth and depth in enabling developers to bring modern, trend-setting applications to market while shortening development time. If you need gesture/touch support, dynamic themes, and lightning fast performance in one WPF package, look no further.



Installation

Downloading	Download Infragistics Controls for WPF here.
--------------------	--

What's New

Component	Feature Name	Descriptions
xamCategoryChart	New control	<p>The xamCategoryChart can be easily configured to display category data using a simple API. All you need to do is bind your data (a collection or a collection of collections).</p> <p>Built to be easily configurable, it uses the Data Chart control as its engine, which means that it benefits from the high performing and powerful Data Chart features.</p>
xamDataChart	Performance Enhancements	The performance of the Data Chart control is significantly improved.
xamDataChart	New property ConsolidatedColumnVerticalPosition added	A new property ConsolidatedColumnVerticalPosition is introduced in order to determine the positioning logic to use for columns which have been consolidated into a single visual element.
xamDataChart	Design Changes	The defaults of the xamDataChart, xamPieChart, xamDoughnutChart, xamFunnelChart, xamRadialGauge, xamLinearGauge, xamBulletGraph and xamSparkline controls are redesigned.

xamDataChart	New Chart Series (CTP)	Two new chart series, scatter area series and scatter contour series, are added to the chart in this release. These two series are a 2D version of the 3D surface chart control.
xamGeographicMap	Legend is displayed for Geographic Map (CTP)	This CTP feature enables the Geographic Map control to display a legend.
xamShapeChart (CTP)	New control	The Shape Chart CTP control displays cartesian and geographic shapes on a chart surface. It can be used display items such as floor plans, diagrams, and maps.
xamPieChart	Slice Selection	You can now select a pie slice on the xamPieChart control. This feature is enabled by default. We also added new selection events, some of which are cancelable, so you can stop selection of particular slices from occurring.
xamPieChart	New Event for the Pie Chart	The xamPieChart control now has a LabelClick event that fires when the labels of the pie slices are clicked.
xamPieChart	Label Coloring	You can now specify the color of the labels depending on whether they are rendered inside or outside of a pie slice. These properties are LabelInnerColor property and LabelOuterColor property.
Infragistics Excel Engine	Obtain All References for a Given Rule	The DataValidationRuleCollection now exposes a GetAllReferences method which returns a collection of references that have data validation rules equivalent to the given rule.
Infragistics Excel Engine	New Method for Comparing Data Validation Rules	The DataValidationRule now has an IsEquivalentTo method which compares this rule with the given one and returns true if the rules are structurally equivalent.
Royal Dark Theme	New Theme	The Royal Dark theme is a consistent and simplified new theme enriched with more visual states, featuring more depth and improved UX.

xamCalendar, xamMonthCalendar, xamDateTimeEditor, xamDateTimeInput	Configuring the Scrolling Direction	The xamCalendar, xamMonthCalendar, xamDateTimeEditor and xamDateTimeInput controls are exposing a new property ScrollDirection which allows you to configure the scroll direction of the calendar item group(s) when pressing the navigational arrows. Previously only horizontal scrolling was implemented.
xamDataPresenter	Cross-Field Record Filtering	The data presenter controls now support the definition of filtering rules with logical connections between them.
xamDataPresenter	Field Chooser Look	The default look of the field chooser for data presenter controls with a single field layout now includes a check box on the top for selecting all fields.
xamPropertyGrid	Data Template Selector Support for Editor Definition	The xamPropertyGrid control now supports assigning of data template selector on an editor definition.
xamRichTextEditor	New Event for the Document Adapters	All document adapters extending from RichTextDocumentAdapterBase are having a new DocumentLoadError event which is raised when an exception is thrown while attempting to load a document.

What's Changed

Work Item ID	Components	Product Impact	Resolved date	Description
218830	Data Chart	Bug Fix	8/25/2016	Data Chart throws an exception when the Extent property is set to a negative value.
224524	Data Chart	Bug Fix	8/31/2016	Setting the Data Chart OPD to Visible after series rendered and zooming triggers an unhandled exception.

				Notes: An exception caused when showing the OPD later after not being initially displayed has been resolved.
215354	Data Presenter	Bug Fix	5/23/2016	[PrintBasic] Text of the FieldGroup is getting outside of the background rectangle in the Field Chooser.
220415	Data Presenter Cross Field Filtering	Bug Fix	6/7/2016	An exception is thrown when AllowCrossFieldRecordFiltering is set to False, AllowRecordFiltering is set to False and you are trying to edit the Field value of the filter condition.
220478	Data Presenter Cross Field Filtering	Bug Fix	6/8/2016	The Operand combo box is no longer editable if AllowRecordFiltering is set to False.
222965	Data Presenter Cross Field Filtering	Bug Fix	8/5/2016	The Record Selector and Filter Icons flicker when enabling and disabling cross-field filtering.
219522	Data Presenter Field Chooser	Bug Fix	5/20/2016	Select all fields checkbox state is incorrect when attempting to hide the fields when they are all in field groups.
219531	Data Presenter Field Chooser	Bug Fix	5/20/2016	Fields' visibility is not properly updated through Field Chooser when placed in collapsed Field Groups.
224383	Data Presenter Fixed Fields	Bug Fix	9/2/2016	The Field is not fixed properly when switching from fixed to one edge to the other if LabelLocation="InCells".
225228	Data Presenter Word Writer	Bug Fix	9/14/2016	DataGrid headers are not exported to Word when the LabelLocatin is set to InCells.
225107	Date Time Editor	Bug Fix	9/12/2016	Vertical scrolling buttons are not rotated vertically in some of the themes of xamDateTimeEditor.
222058	Excel	Improvement	8/5/2016	Method for comparing data validation rules is missing.
				Notes: Added an IsEquivalentTo method to the DataValidationRule so that rules can be compared to see if they are structurally equivalent (i.e. have the same state). Also a GetAllReferences method has been added to the DataValidationRules collection

				to provide a way to get all references associated with a rule that is structurally equivalent to the specified rule.
226120	Geographic Map	Bug Fix	9/28/2016	Both map series mouse events and actual series mouse events are not firing for a map with Geographic Scatter Area Series.
225108	Month Calendar Editor	Bug Fix	9/12/2016	Vertical scrolling buttons are not rotated vertically in some of the themes of xamMonthCalendar.
221889	Reporting	Bug Fix	7/26/2016	Label TextWrapping does not occur for the Unbound Fields that span across the Data Grid's width.
221930	Rich Text Editor	Bug Fix	9/8/2016	[Ctrl] + X, Delete and [Ctrl] + Z takes a lot of response time .